

# THESIS AND EMBODIED WRITING BLUEPRINT

A WORKSHOP FOR MASTER'S STUDENTS

PRESENTED BY TAMIU ARC

WRITING CONSULTANT – FRANCO ZAMORA

SPRING 2023



# TONIGHT'S AGENDA

---

## Thesis Blueprint Discussion



Research  
Questions



Research  
Design



Literature  
Review



Analyzing  
Data



Drafting

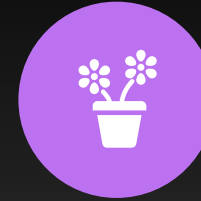


Formatting

## Embodied Writing Activities



ORGANIZING  
YOUR WRITING  
SPACE



DESK YOGA



PLANNING YOUR  
WRITING TIME

# GRADUATE WRITING CONSULTANT (ME)



TEXAS A&M **INTERNATIONAL** UNIVERSITY

## GRADUATE WRITING CONSULTATION

**All graduate disciplines welcome!**

Advanced Research & Curriculum (ARC) Writing Consultant helps graduate students develop writing skills. Learn the research processes, incorporate scholarly sources into your writing, collaborate with other experienced students, and organized ongoing thesis writing.

### **Services Include**

Graduate tutoring and Peer Review Sessions

Thesis and Dissertation Support Sessions for MA, MS, and PhD students

Writing & Professional Workshops

**PHONE: 956.326.2477**

**PLACE: Pellegrino 203J**

**Online & late night hours available by appointment**

writingconsultant@tamiu.edu



<https://www.tamiu.edu/cees/arc/pages/consultation.shtml>

<https://www.facebook.com/txamiu.arc/>

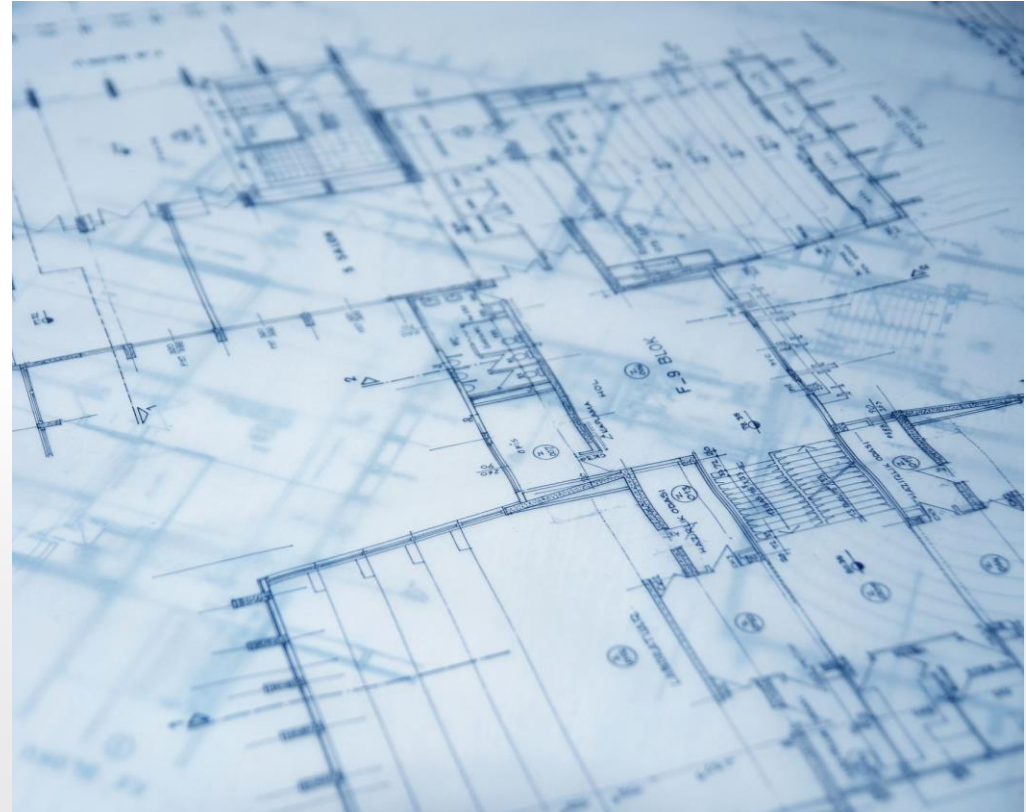
Full of Writing Guides and Resources!

Book appointments online!

# THESIS BLUEPRINT

---

- What is it?
- What do you think about it?
- How can I help demystify the process?
  
- How is it different than the kinds of writing you do?
- What is your experience with writing?



# WELL, WHAT IS IT? HOW IS A THESIS OR DISSERTATION DIFFERENT FROM A SEMINAR OR RESEARCH PAPER?

---

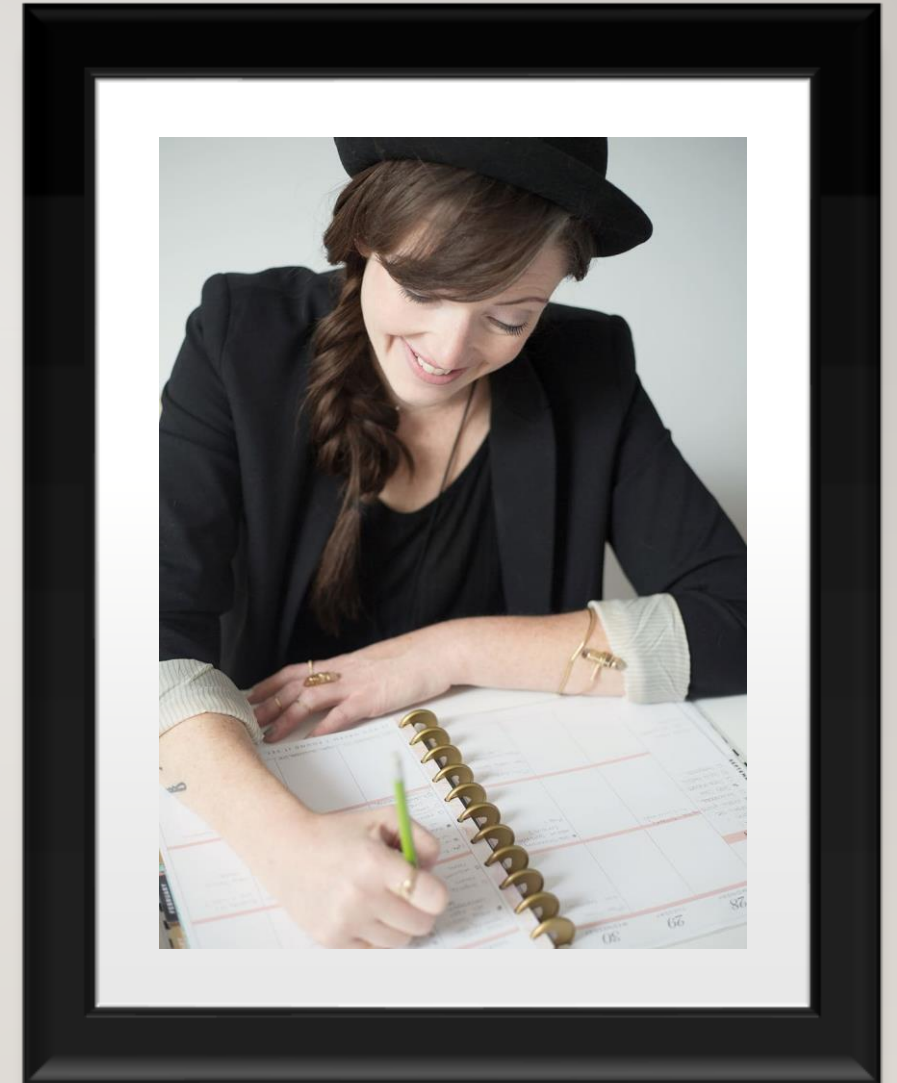
1. Longer (obviously)
2. *You* have to come up with the topic and structure, as the expert.
3. Different genre of writing, different formal elements and organization
4. Research-focused, theory-focused
5. Asks the student to do a full literature review and research study, to fully understand problems in the field.
6. May or may not involve experimental design (depends on major)
7. Written for a specific audience of professional academics



# EMBODIED WRITING – WHAT IS THAT?

---

- Hui Niu Wilcox – *embodied knowledges* those created and understood through “lived experiences, cultural performance, and bodily intelligence”
- *Embodied writing* – writing about, toward, and with those *lived* personal experiences in mind
- Becky Thompson (*Teaching with Tenderness, 2017*) – “By tenderness, I mean an embodied way of being that allows us to listen deeply to each other; to consider perspectives that we might have thought way outside our own worldviews, to practice a patience and attentiveness that allow people to do their best work, to go beyond the given, the expected, the status quo” (1).
- A. Abby Knoblauch (“Bodies of Knowledge,” 2012) – writing is social, personal, and professional (62)
- Writing with the human experience at heart—placing ourselves, as writers, in positions as *people* first and foremost.



# WRITE AND THINK:

---

- For five minutes, write about experiences you may have had with embodied writing
  - How do you currently feel?
  - How does your body usually feel when you are writing?
  - How would you want to feel in an ideal setting when writing?

<https://youtu.be/tAUf7aajBWE>



---

**EMBODIED WRITING ACTIVITY 2:  
DESK YOGA**



# ACTIVITY 3

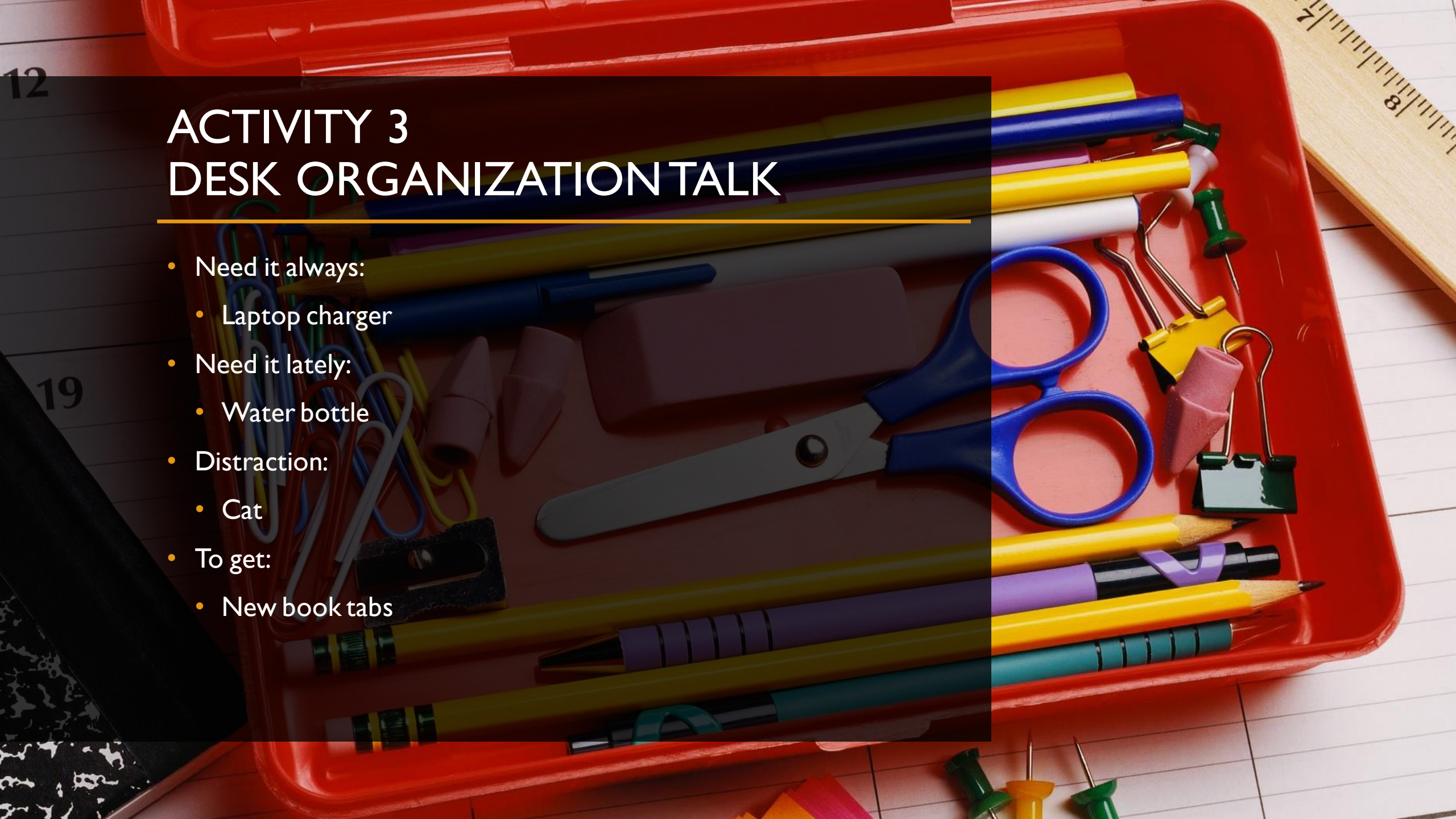
## DESK ORGANIZATION TALK

---

- Need it always:
  - Laptop charger
- Need it lately:
  - Water bottle
- Distraction:
  - Cat
- To get:
  - New book tabs

12

19



# WHAT'S NEXT?

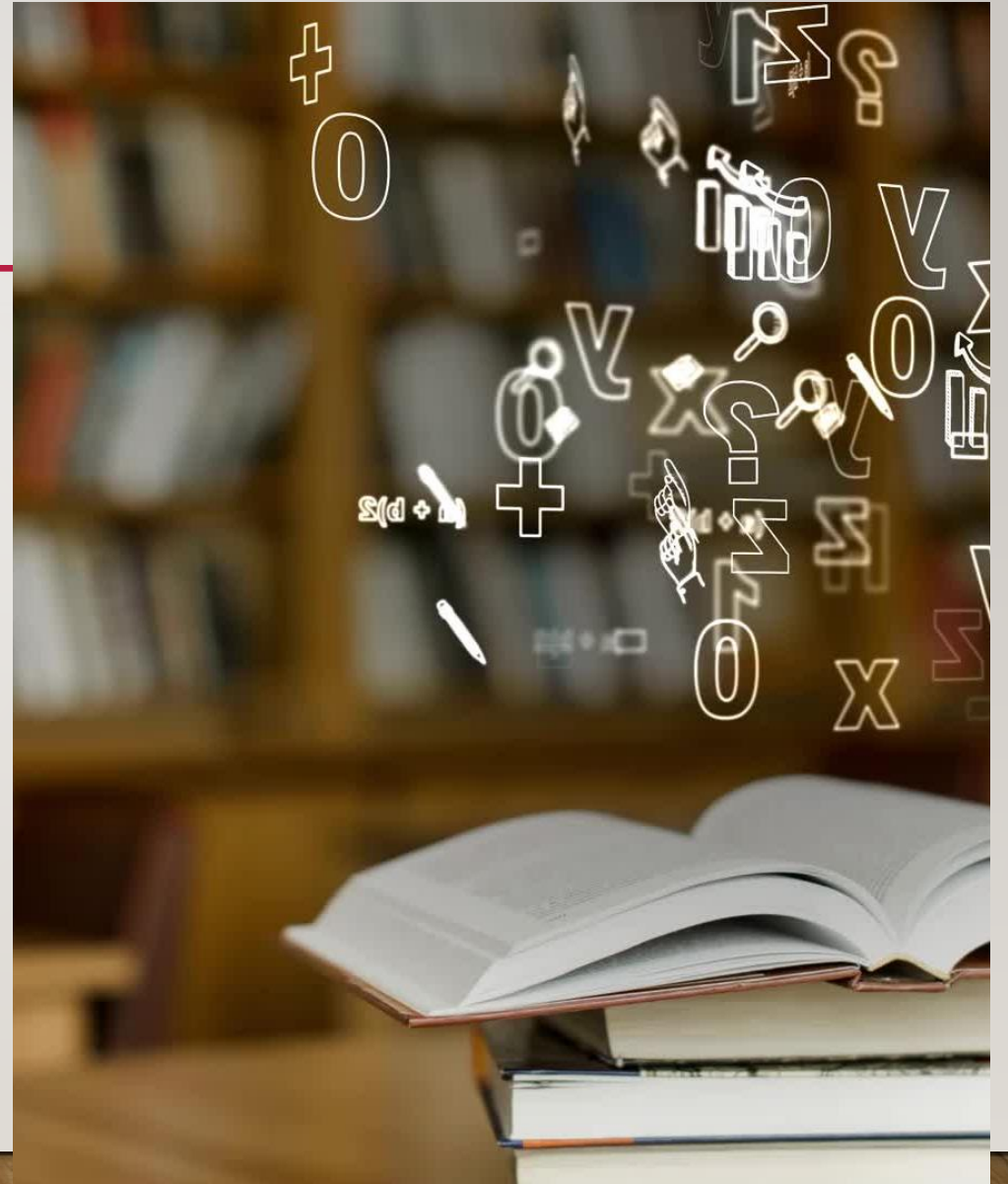
---



# WHAT IS A LITERATURE REVIEW, AND WHY DO PEOPLE CARE SO MUCH ABOUT IT?

---

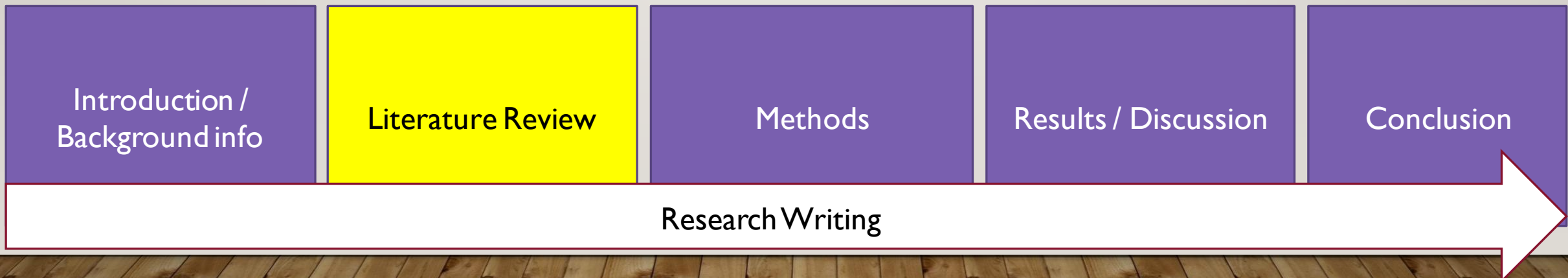
- “A literature review surveys scholarly articles, books, and other sources (e.g. dissertations, conference proceedings) relevant to a topic for a research paper. Its purpose is to demonstrate that the *writer* has insightfully and critically surveyed relevant literature on his or her topic in order to convince an intended *audience* that this *topic* is worth addressing” (Clark 105).



# WHAT IS A LITERATURE REVIEW?

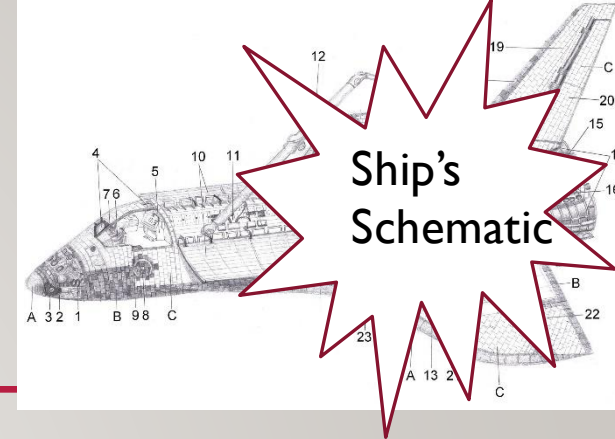
---

- It's a piece of writing where you tell your audience what you have read about your topic in order to prove that you know what you're talking about (and to show them the state of the research field).



See how other people in your discipline structure their thesis at TAMIU Thesis and Dissertation Repository!

# HOW IS IT MADE? OUTLINING YOUR THESIS –



## THE LOOSE STRUCTURE

- Thesis Proposal (Thesis I)

STEP ONE:

- Introduction – Historical background, the problem, the research question, the hypothesis
- Literature Review – full breakdown of seminal texts, and their relevance to your question
  - Methodology (often) – How you intend to structure the rest of the work



STEP TWO:

Experimental Design/Scientific Method (Thesis II)

Data  
Results  
Analysis  
Discussion

Analytical/Theoretical (Thesis II)

Argument + Evidence 1  
Argument + Evidence 2  
Argument + Evidence 3  
Conclusion



# RESEARCH QUESTION

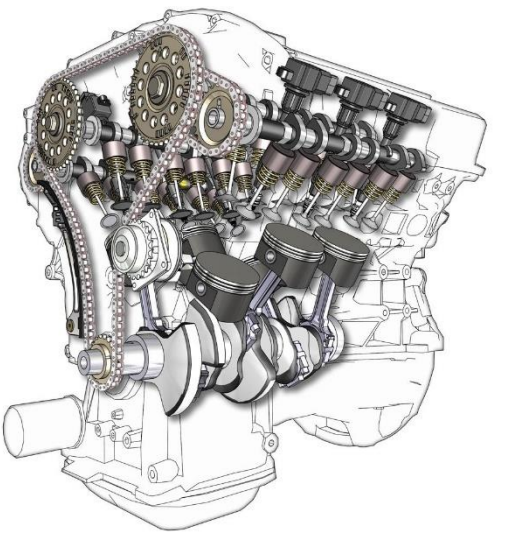
---

- What are the elements of a great research question?
- It needs to be researchable and specific—which means that it cannot be too broad.
  - “Why do so many people drink soda?” is too broad. It does not consider a specific population, area, time period, and there is no indication *why* this question needs to be answer. Who is the academic or professional audience for this question?
  - Try: “How has increased commercial advertisement for specific brands of soda contributed to increased soda consumption in the southern United States?”
- It is relevant and interesting to an established audience—so the scope can’t be too narrow.
  - “How many teenage inmates accused of arson in Wisconsin have read the works of Keats and what has it done for their social development after release?” is probably too narrow. Would answering this question contribute to a specific academic field? What good would having an answer to this question serve?
  - Try: “What impact has classic literature had on the social development of inmates in specific facilities?”
- It needs to be complex enough—usually involving a mix of specific considerations without being overwhelming. It has to be something that *you* would be willing to write dozens of pages about.
- It needs to be flexible—many writers start with an idea in mind that they believe that they would like to research and discover later that there is less information on the topic, less viability, or less interest in the information being gathered. Beginning writers should be willing to change focus.

# MANUSCRIPT: WHAT'S IT MADE OF? FORMAT AND THE THESIS OR DISSERTATION

---

- What citation style should you use for your manuscript?
  - Your Journal model and the Thesis Manual.



For Tables and Figures (whether text is above or below), follow the Journal Model, which you should select with your advisor's help.

You may also now opt to use APA, MLA, or Chicago style for in-text citations and References.

For all other things, including page numbers, headers, footers, Table of Contents, headings and subheadings, Title Page, Abstract, margins, and spacing follow the Thesis Manual.

See **Thesis Manual Guides** at the end.

# UPCOMING WORKSHOPS FOR APRIL

WORKSHOP	PRESENTER	DATE	LOCATION
Advanced Qualtrics Techniques	Tano Trevino	January 26	(Hybrid) Virtual & In-Person
Mastering Excel & Running Stats	Jacinto De La Cruz Hernandez	February 9	(Hybrid) Virtual & In-Person
Mentoring Undergraduate Researchers at TAMIU	Dr. Mustafa Al Lail	February 22	(Hybrid) Virtual & In-Person
Mastering the Literature Review	Franco Zamora	March 10	(Hybrid) Virtual & In-Person
The Importance of Research	Dr. Chris Ferguson	March 29	(Hybrid) Virtual & In-Person
PROF Grants & Publications	Drs. Tobin & Kilburn	March 31	In-Person
Thesis Writing Blueprint: A Workshop for Master's Students	Franco Zamora	April 13	(Hybrid) Virtual & In-Person
Creating a Winning CV & Website	Brenda Guerrero	April 27	(Hybrid) Virtual & In-Person



**13** THESIS WRITING BLUEPRINT:  
FOR MASTERS STUDENTS  
@ 6 PM IN PH 219

**27** CREATING A WINNING  
CV & WEBSITE  
@ 6 PM IN PH 219

**FOR QUESTIONS OR INFO CONTACT US**

OFFICE: ANTHONY J. AND GEORGIA A.  
PELLEGRINO HALL (PLG) 203

PHONE: 956.326.2499

EMAIL: TAMIUARC@TAMIU.EDU



VIEW ONLINE:  
[go.tamtu.edu/arc-workshops](http://go.tamtu.edu/arc-workshops)



# REFERENCES

---

Clark, I. (2006). *Writing the successful thesis and dissertation: Entering the conversation*. Prentice Hall.

*Literature Review Guide: How to organize the review*. (n.d.). TUS Midlands. Retrieved on October 27<sup>th</sup>, 2021. <https://ait.libguides.com/literaturereview/organise>

Micciche, L.R. & Carr, A.D. (2011). Toward graduate-level writing instruction. *College Composition and Communication*, Vol. 62(3), pp. 477-501.

Mike, G. (2014). *Graduate writing workshop: Compiled file*. OWL Purdue Online Writing Lab.  
[https://owl.purdue.edu/owl/teacher\\_and\\_tutor\\_resources/teaching\\_resources/writing\\_workshops\\_for\\_graduate\\_students/graduate\\_writing\\_workshops\\_compiled\\_file.html](https://owl.purdue.edu/owl/teacher_and_tutor_resources/teaching_resources/writing_workshops_for_graduate_students/graduate_writing_workshops_compiled_file.html)

NC State University Writing and Speaking Tutorial Service Tutors. (2016). *Writing a Literature Review and Using a Synthesis Matrix*.  
[https://case.fiu.edu/writingcenter/online-resources/\\_assets/synthesis-matrix-2.pdf](https://case.fiu.edu/writingcenter/online-resources/_assets/synthesis-matrix-2.pdf)

*Synthesis*. (n.d.). Ashford University. Retrieved on February 17<sup>th</sup>, 2020 from <https://writingcenter.ashford.edu/synthesis>

Wagenmakers, E. (2009). *Teaching Graduate Students How to Write Clearly*. Association for Psychological Science. Retrieved on February 17<sup>th</sup> from <https://www.psychologicalscience.org/observer/teaching-graduate-students-how-to-write-clearly>

*Writing an Annotated Bibliography: Examples (MLA)*. (n.d.). Massasoit Community College. Retrieved on October 27<sup>th</sup>, 2021.  
<https://library.massasoit.edu/annotatedbib/mla>

*Writing a Graduate Paper*. (n.d.). Ryerson University. Retrieved on February 17<sup>th</sup>, 2020 from [https://www.ryerson.ca/content/dam/studentlearningsupport/resources/graduate-student/Major\\_Research\\_Paper.pdf](https://www.ryerson.ca/content/dam/studentlearningsupport/resources/graduate-student/Major_Research_Paper.pdf)