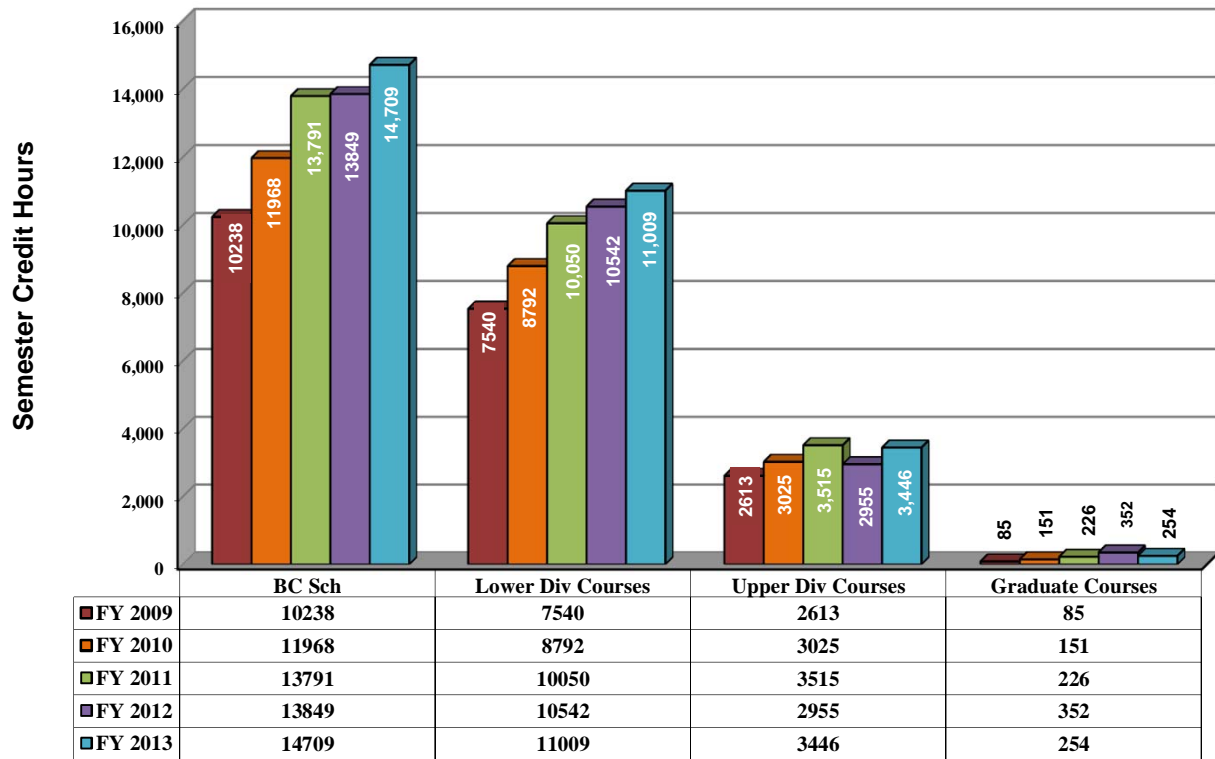


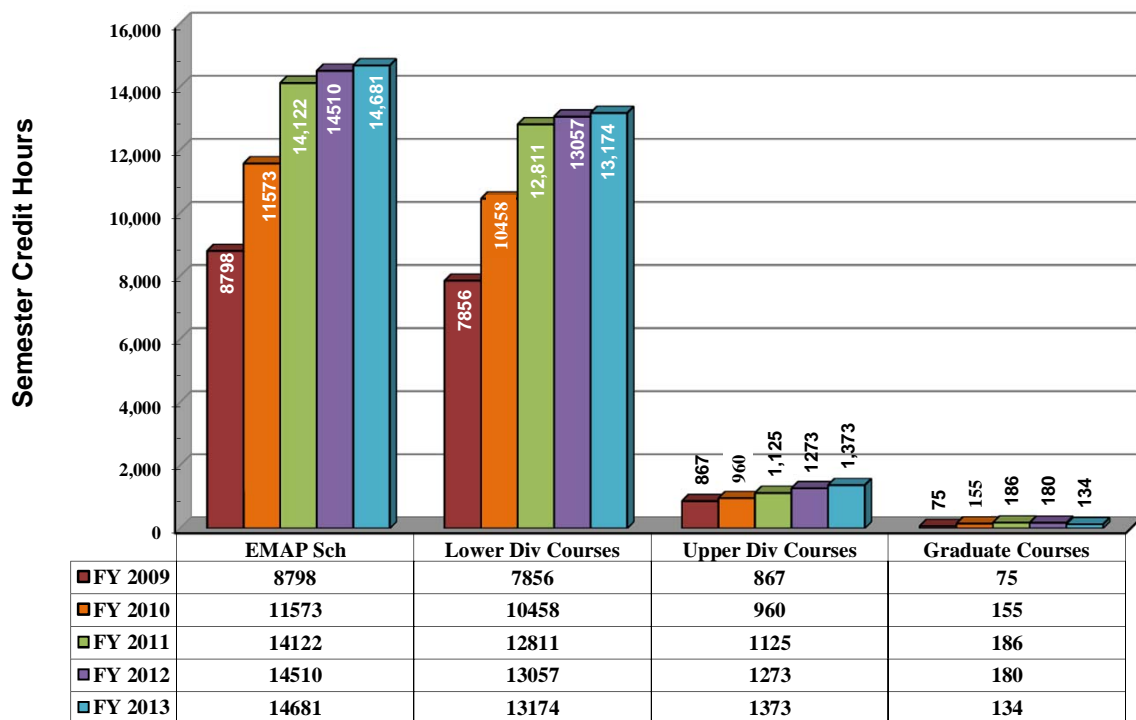
**Texas A&M International University**  
**Program Review Data**  
**Through 2013**

**College of Arts & Sciences**

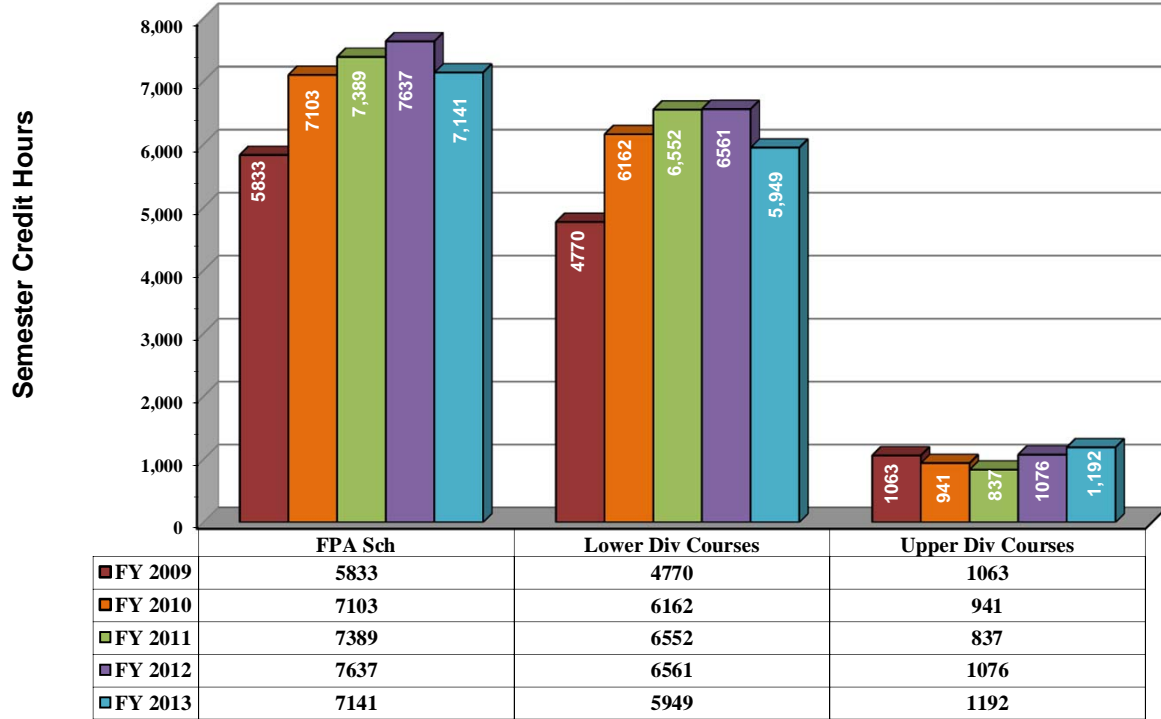
## Semester Credit Hours - Dept: BC



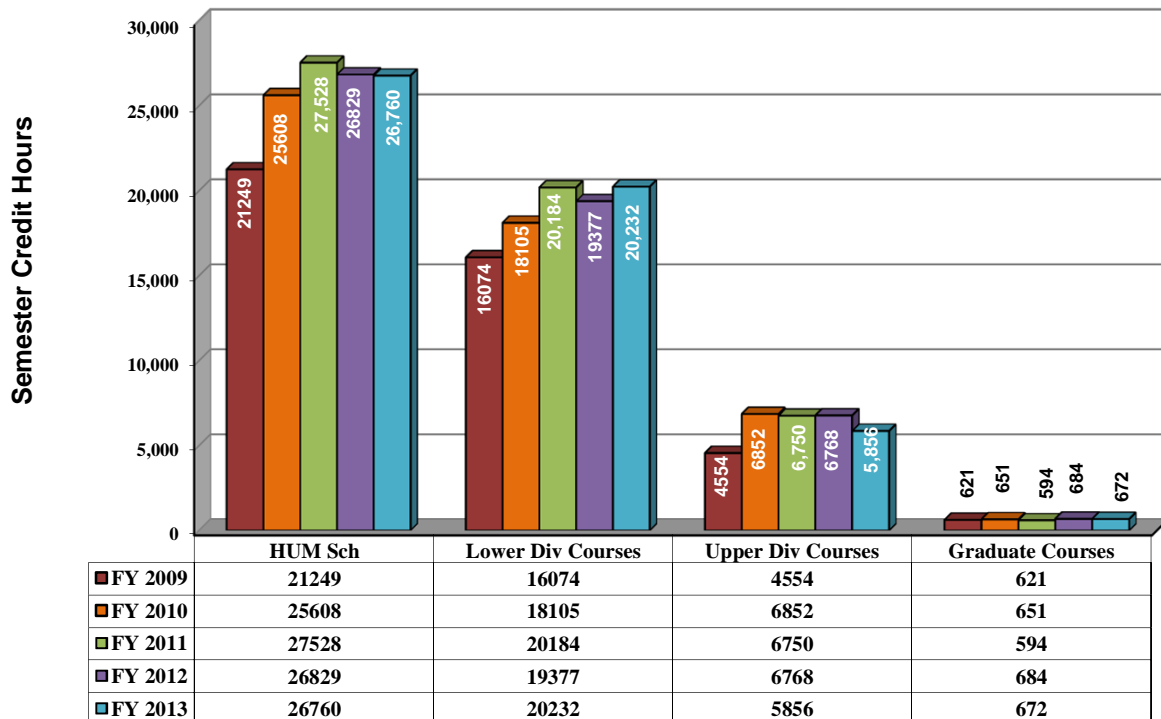
## Semester Credit Hours - Dept: EMAP



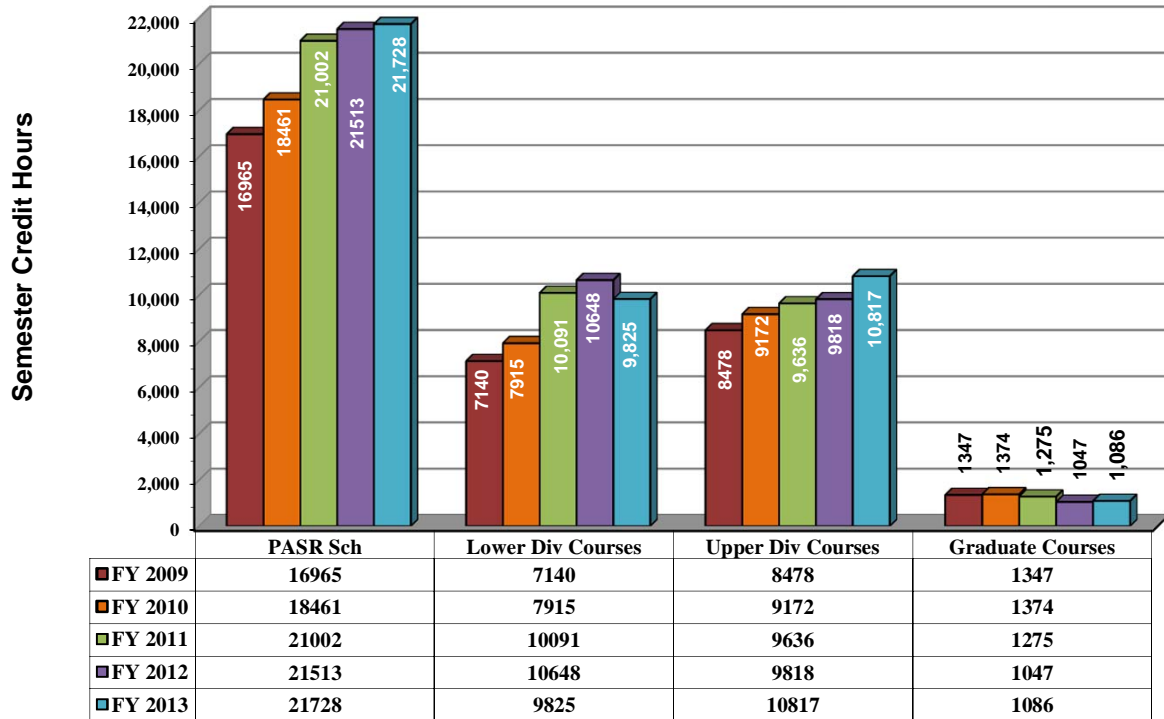
## Semester Credit Hours - Dept: FPA



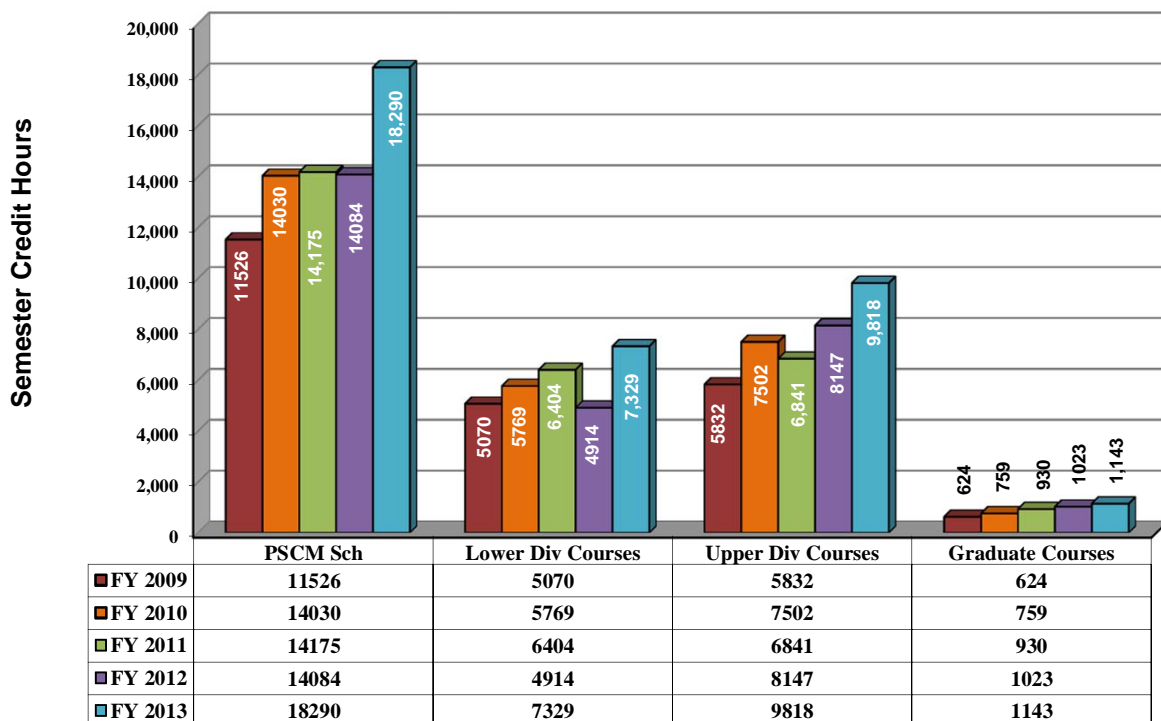
## Semester Credit Hours - Dept: HUM



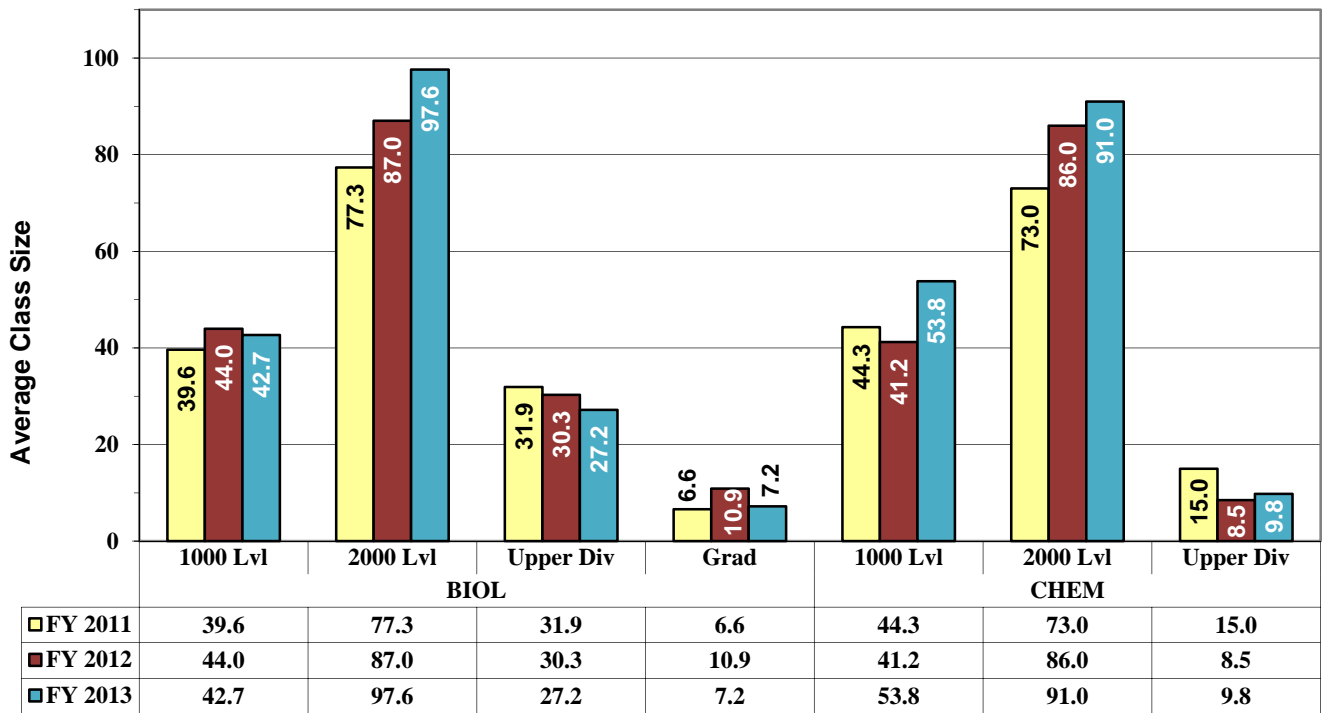
## Semester Credit Hours - Dept: PASR



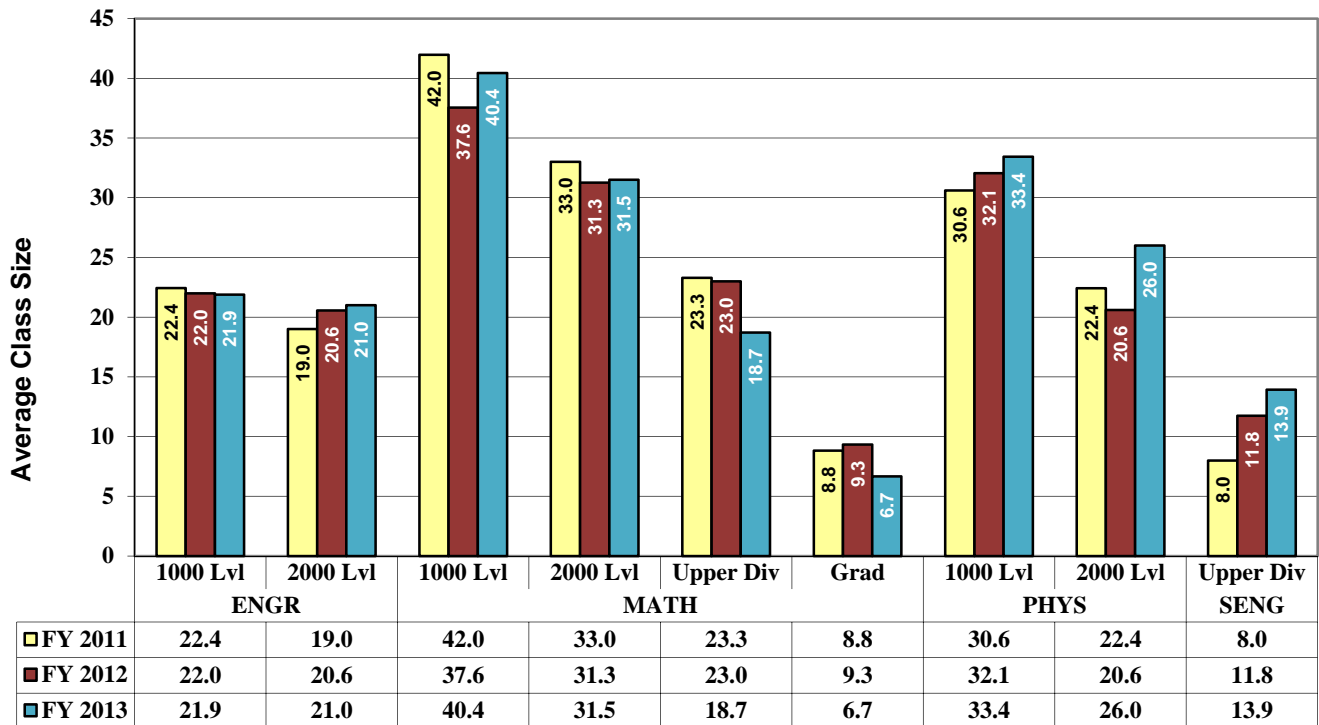
## Semester Credit Hours - Dept: PSCM



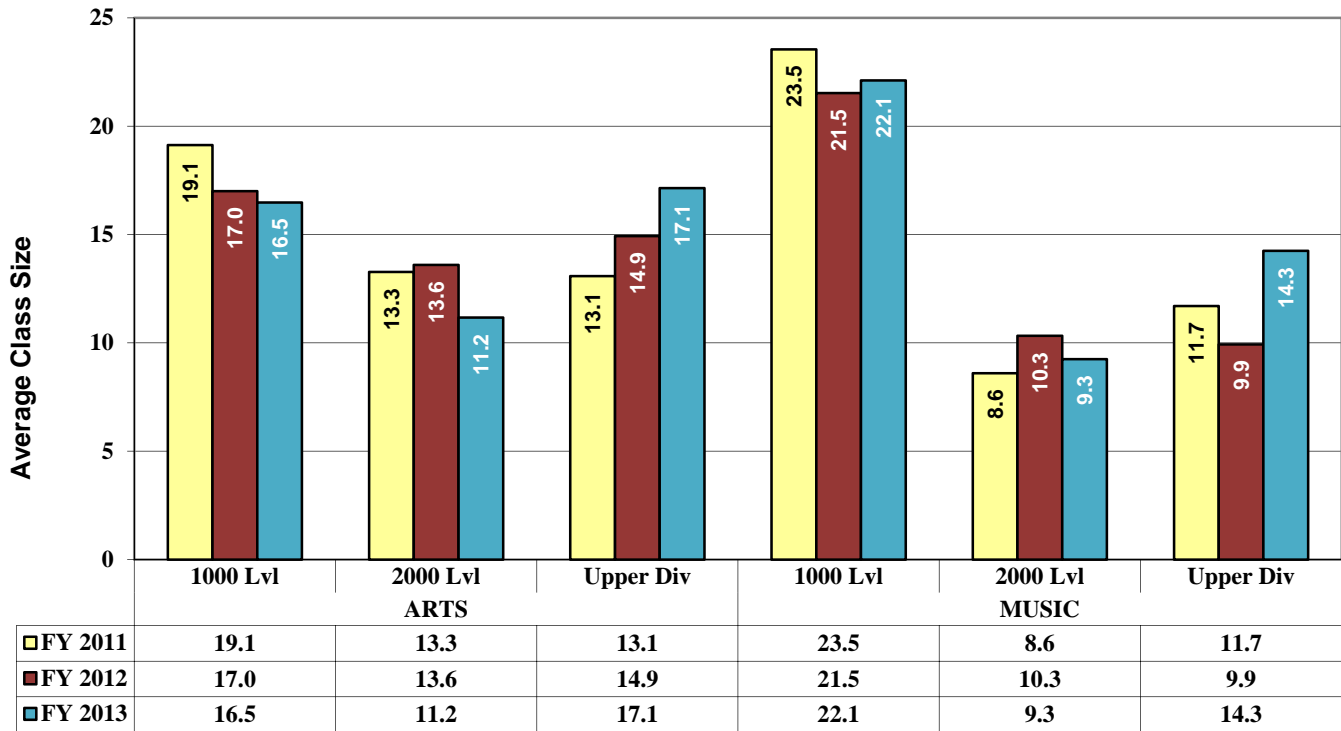
### Average Class Size - Dept: BC



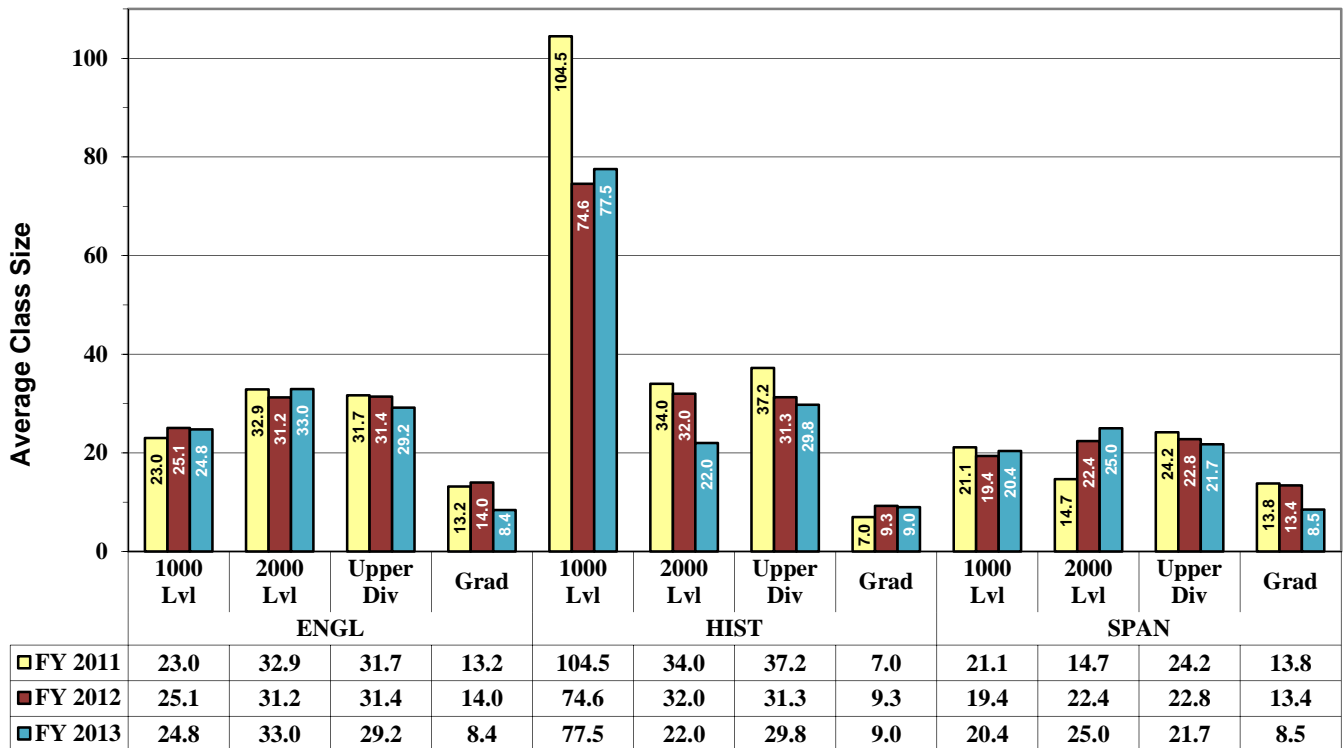
### Average Class Size - Dept: EMAP



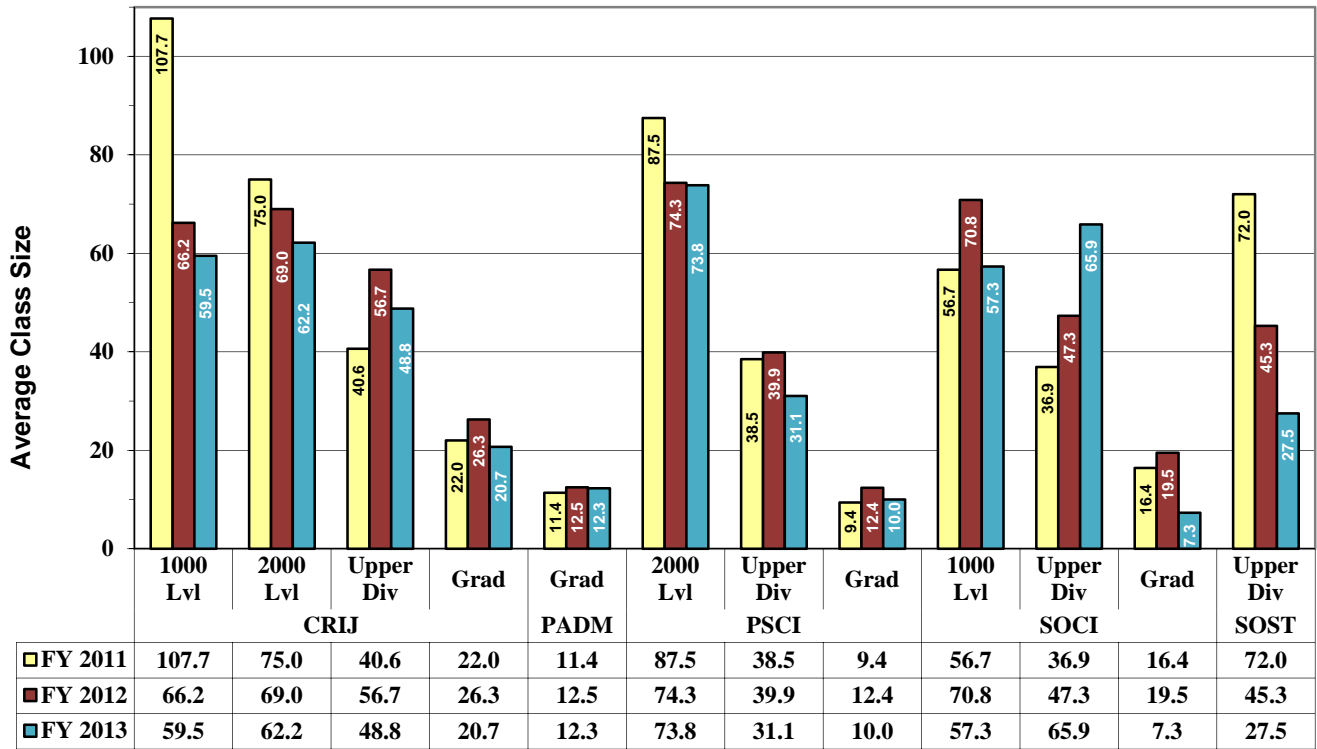
### Average Class Size - Dept: FPA



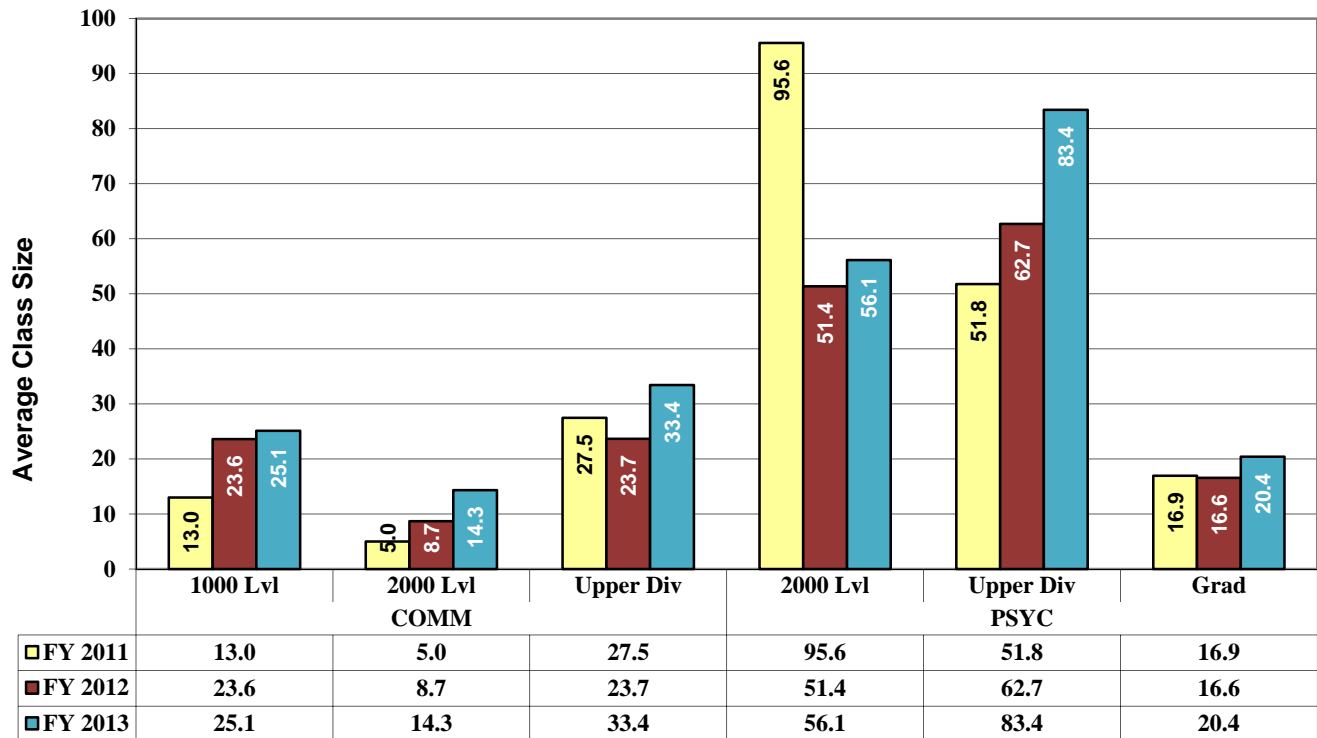
### Average Class Size - Dept: HUM



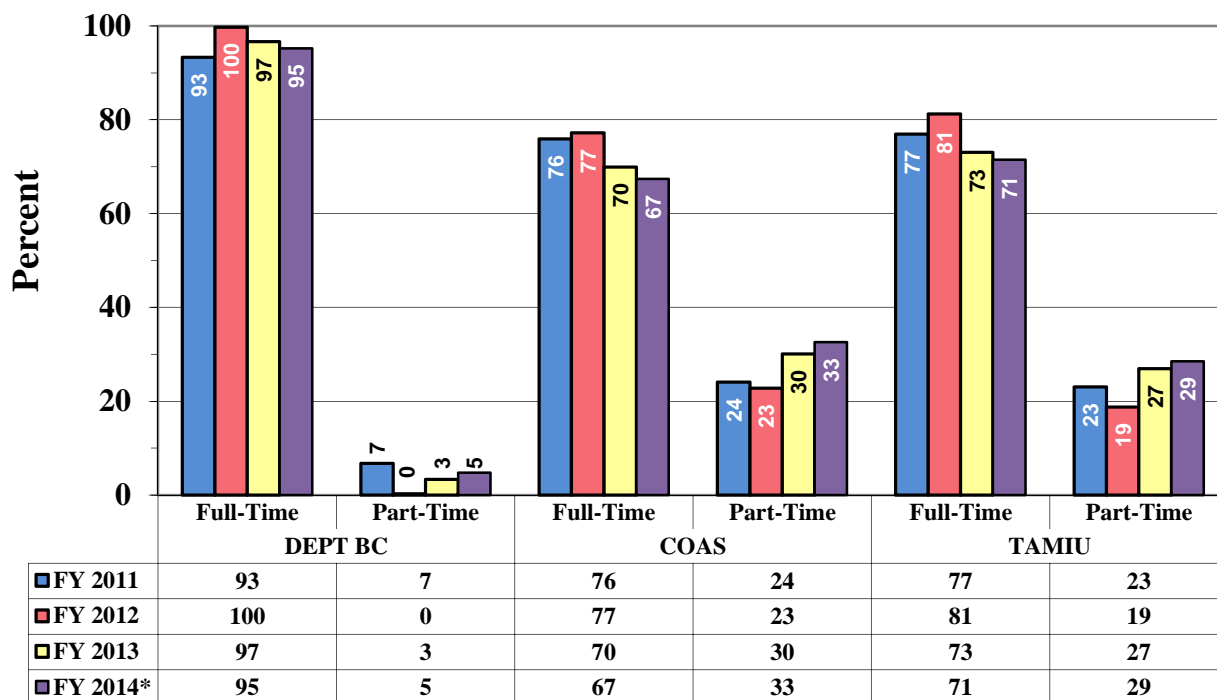
### Average Class Size - Dept: PASR



### Average Class Size - Dept: PSCM

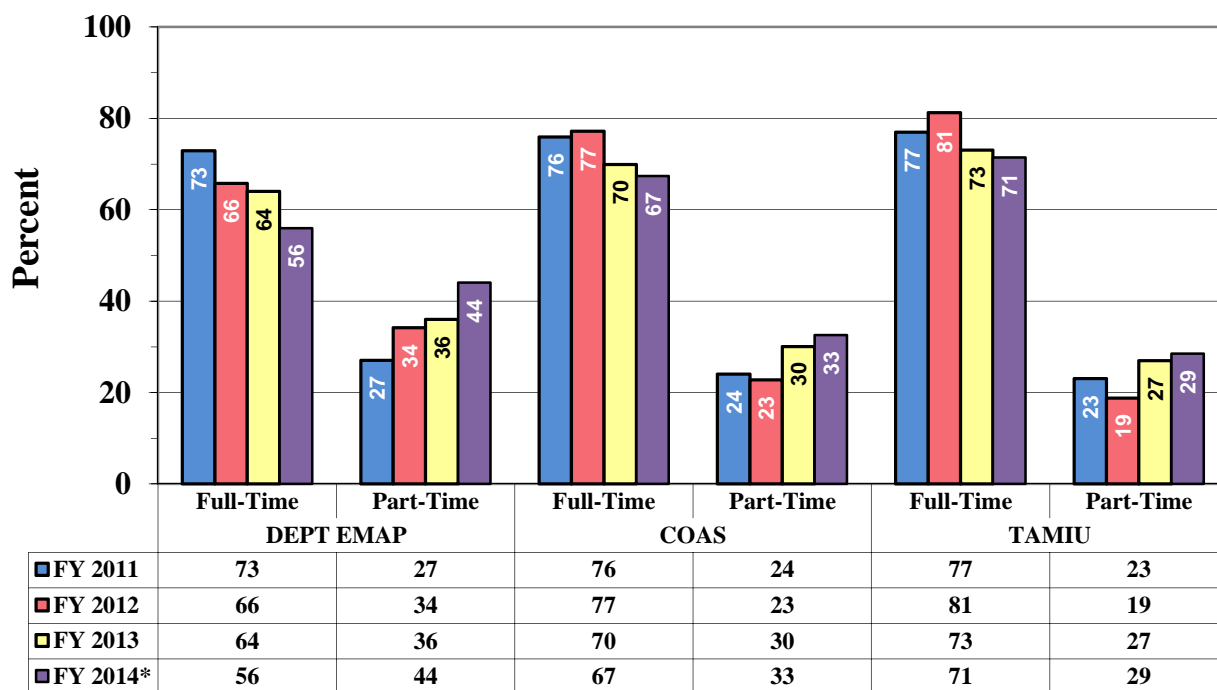


### FY 11-14 Percent of SCH by Full/Part Time Faculty Biology & Chemistry



\* Summer 2014 Not Included

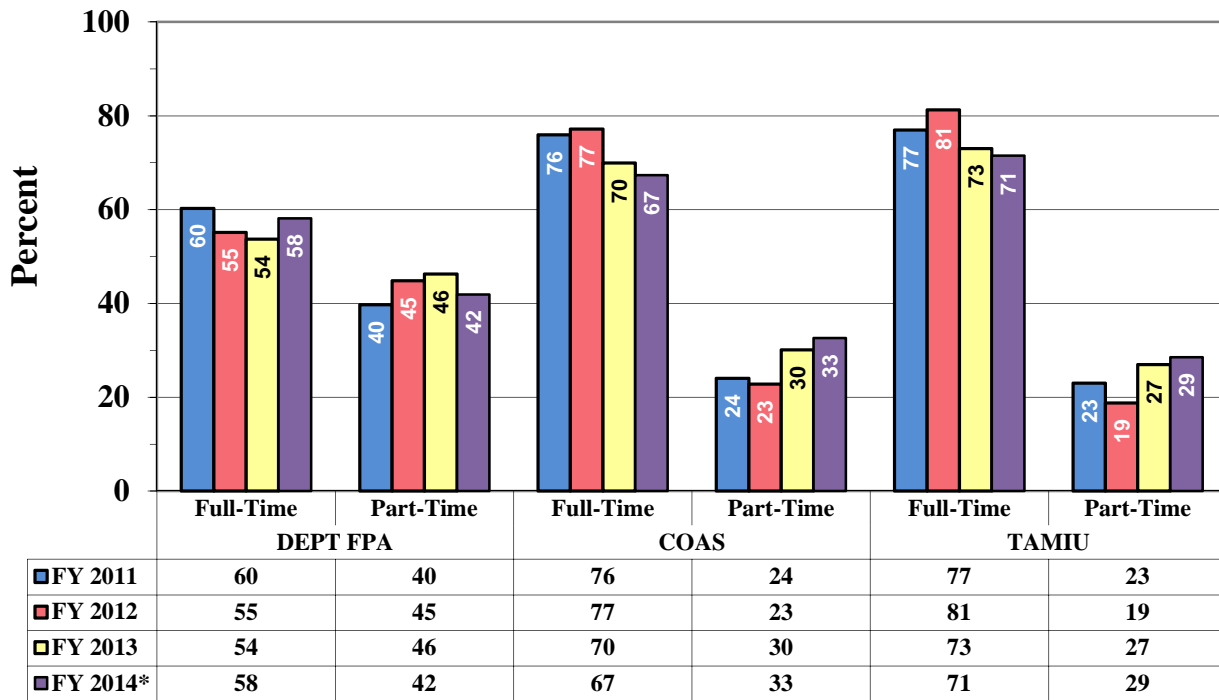
### FY 11-14 Percent of SCH by Full/Part Time Faculty Engineering, Mathematics & Physics



\* Summer 2014 Not Included

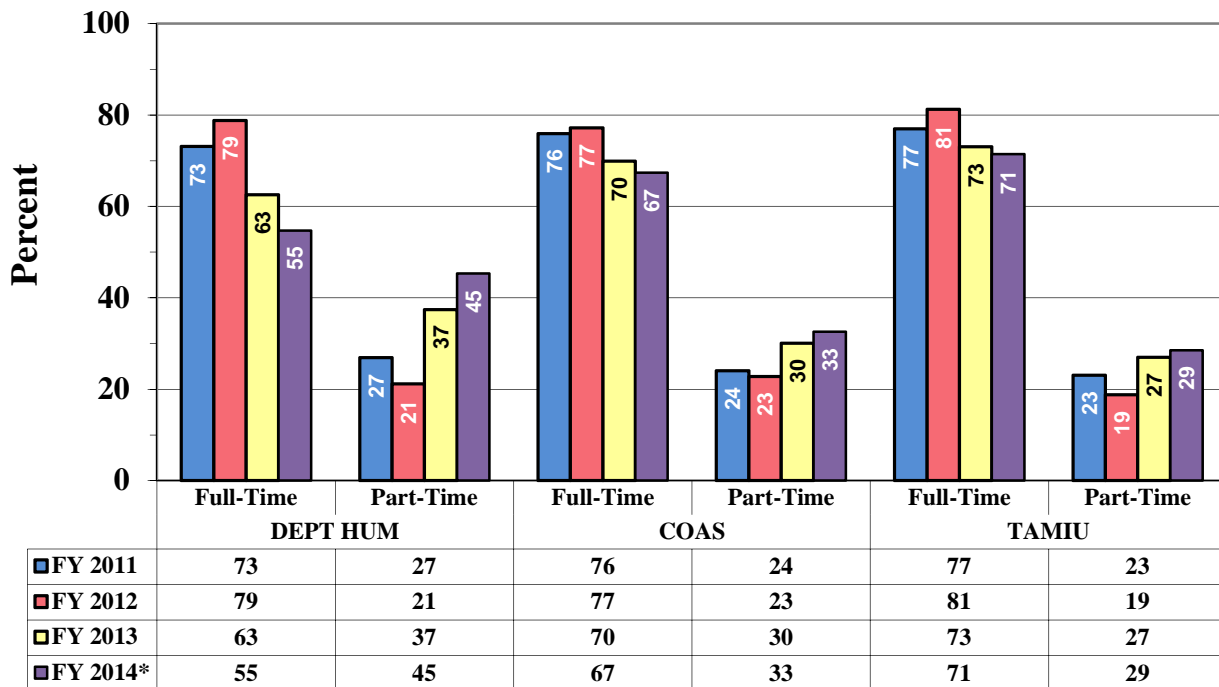


### FY 11-14 Percent of SCH by Full/Part Time Faculty Fine and Performing Arts



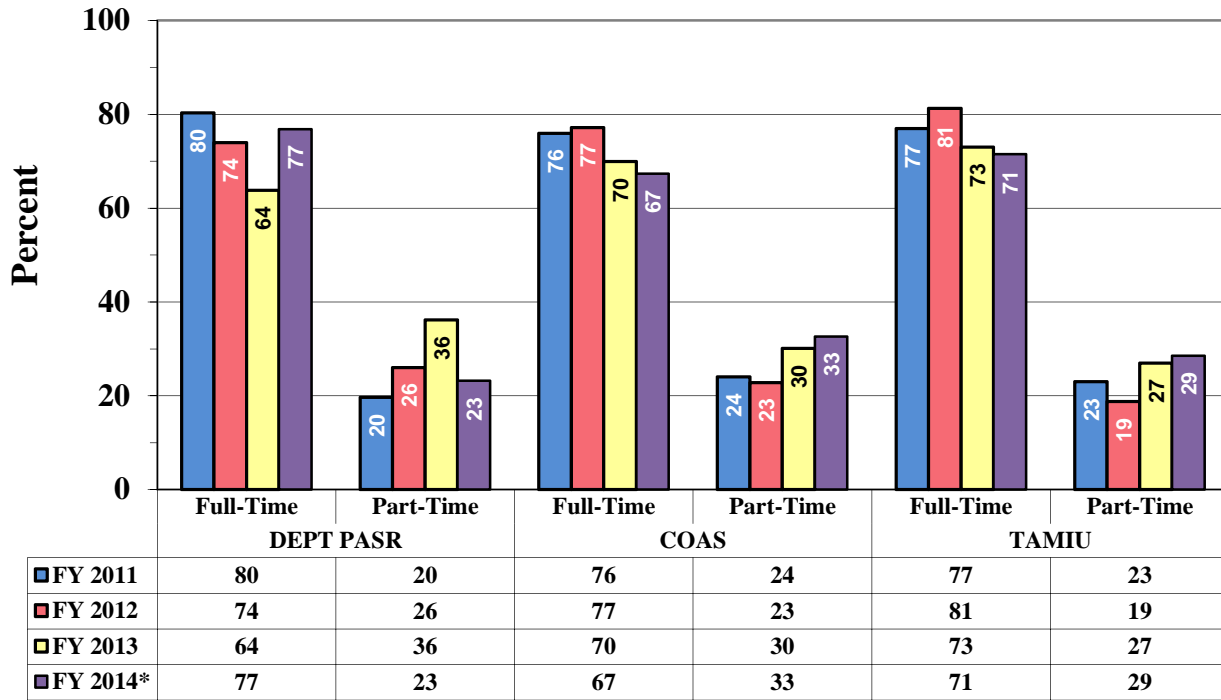
\* Summer 2014 Not Included

### FY 11-14 Percent of SCH by Full/Part Time Faculty Humanities



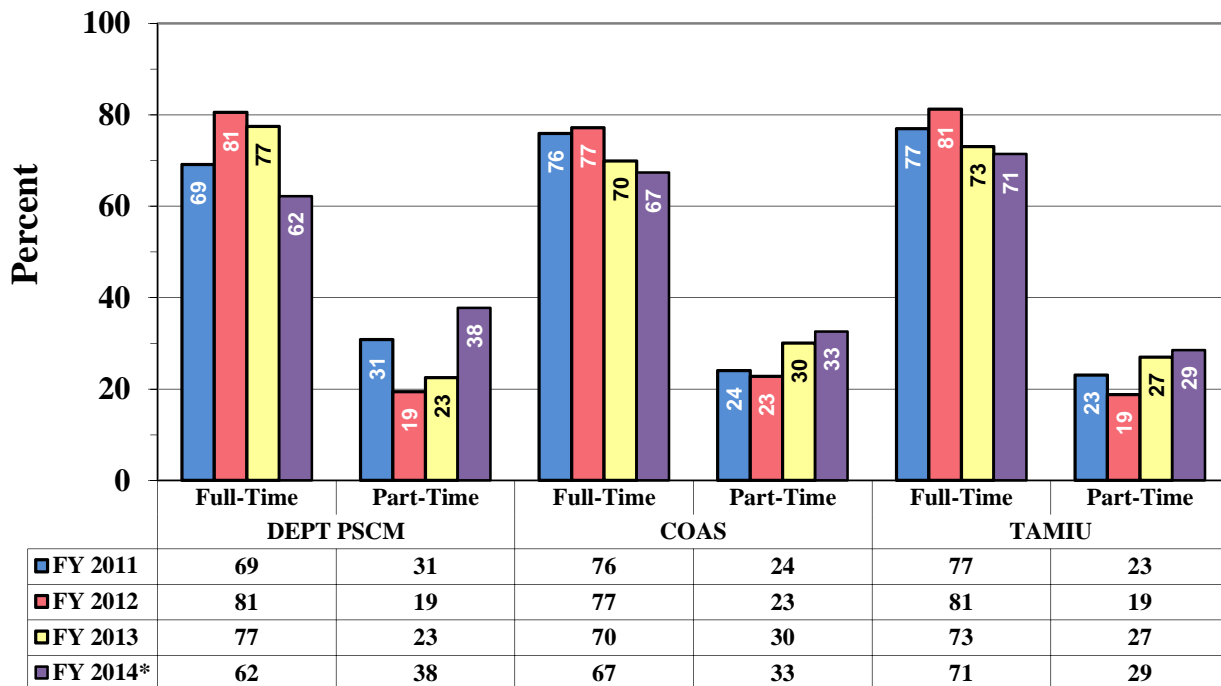
\* Summer 2014 Not Included

### FY 11-14 Percent of SCH by Full/Part Time Faculty Public Affairs & Social Research



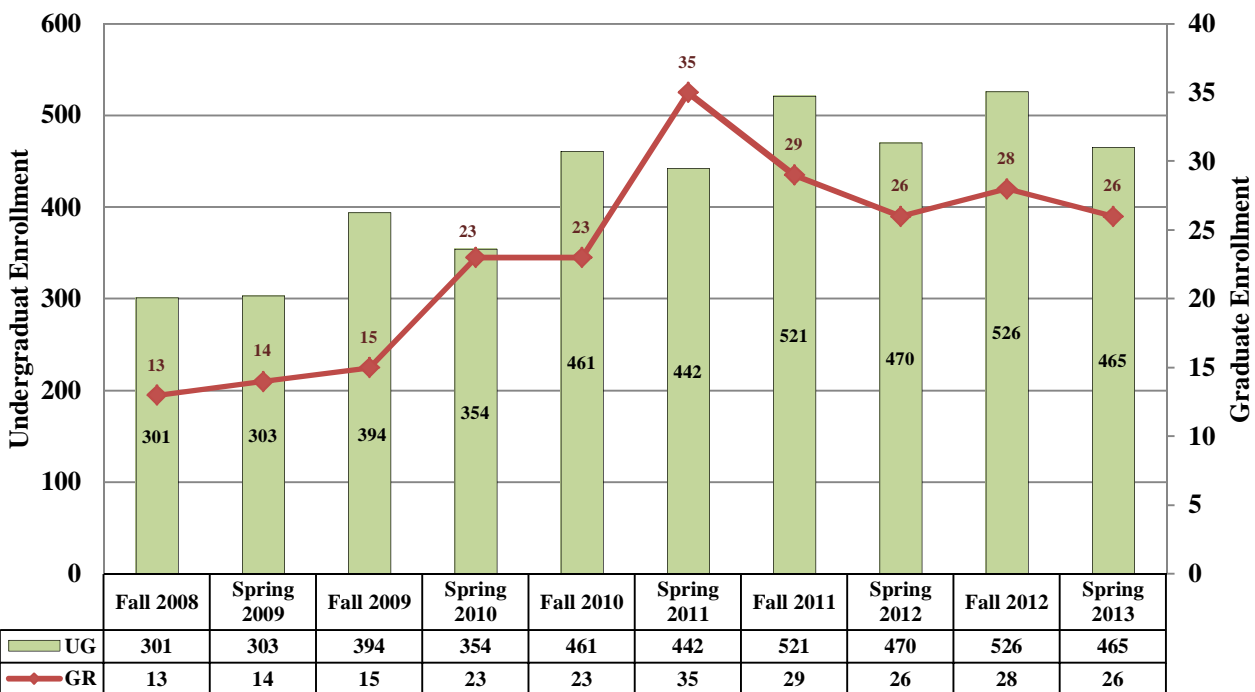
\* Summer 2014 Not Included

### FY 11-14 Percent of SCH by Full/Part Time Faculty Psychology & Communication

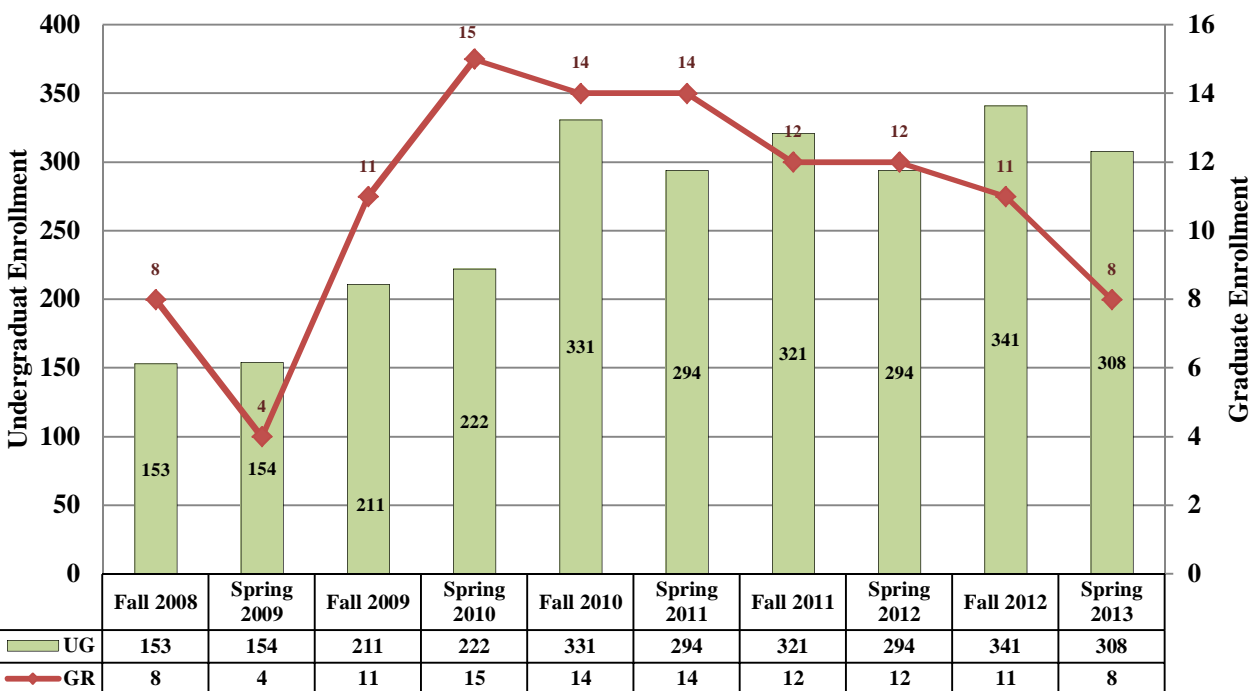


\* Summer 2014 Not Included

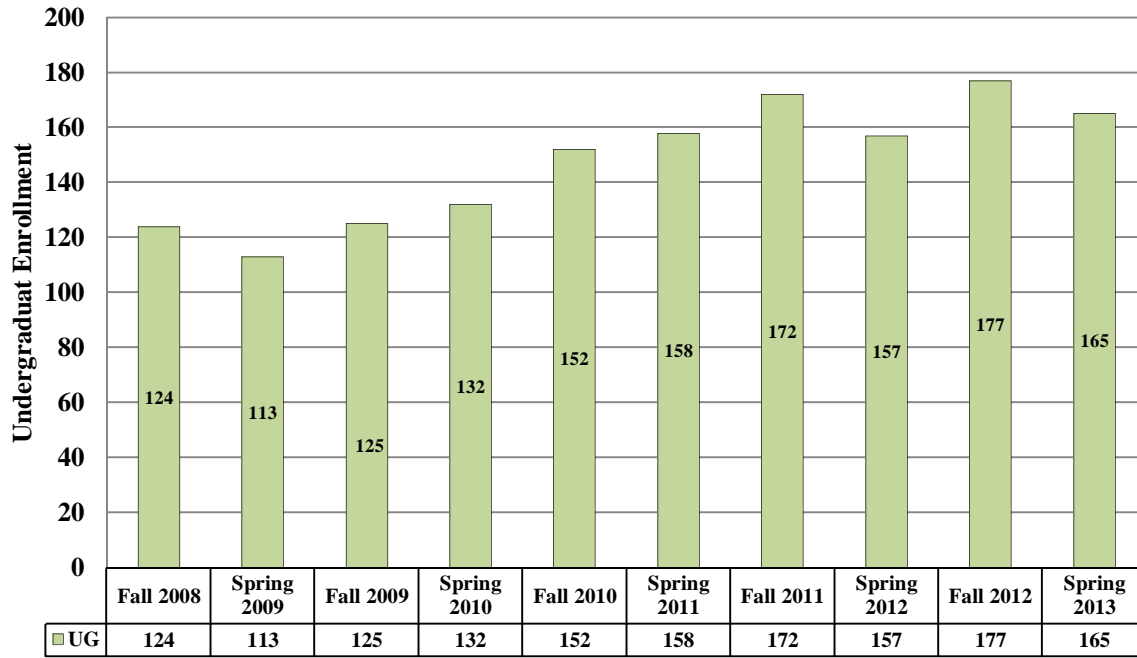
## Department: Biology & Chemistry Majors



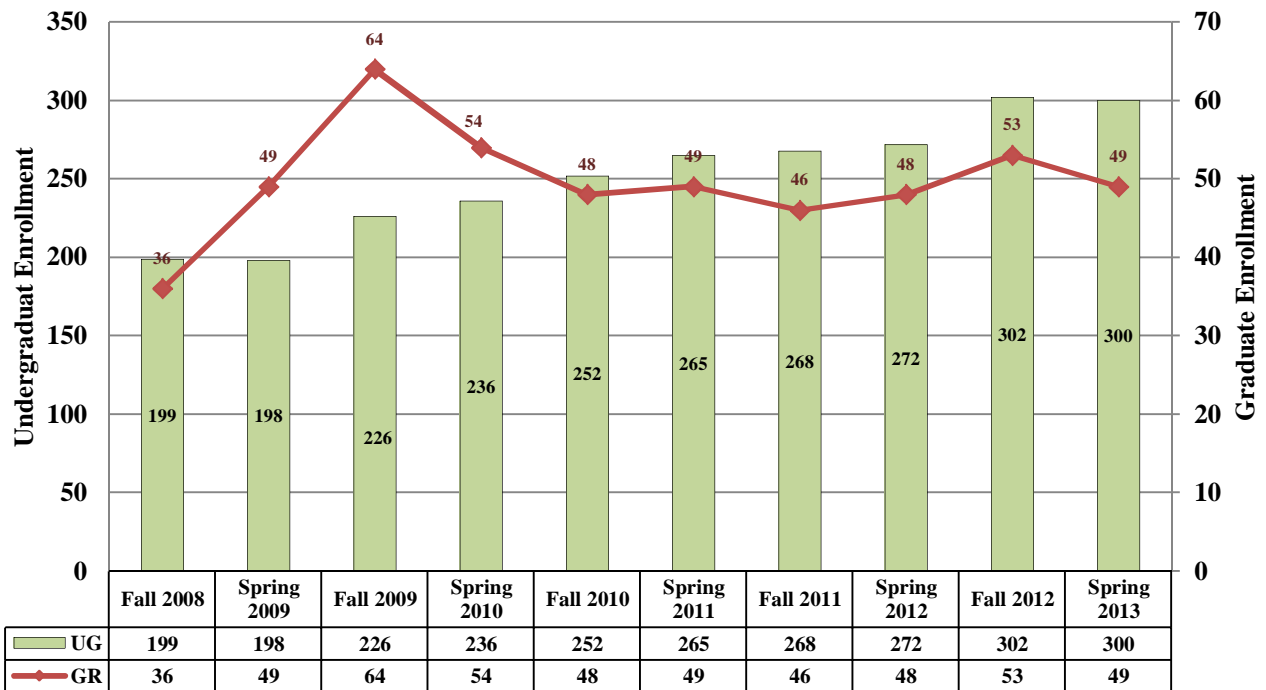
## Department: Engineering, Mathematics & Physics Majors



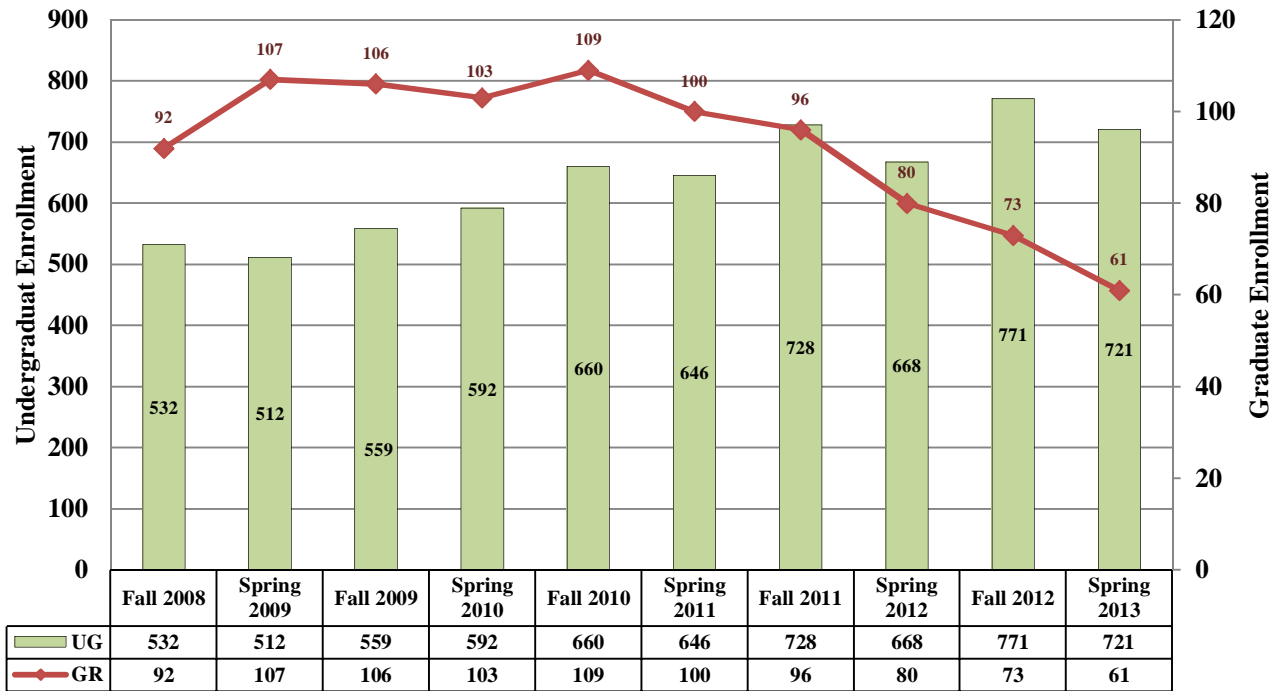
## Department: Fine and Performing Arts Majors



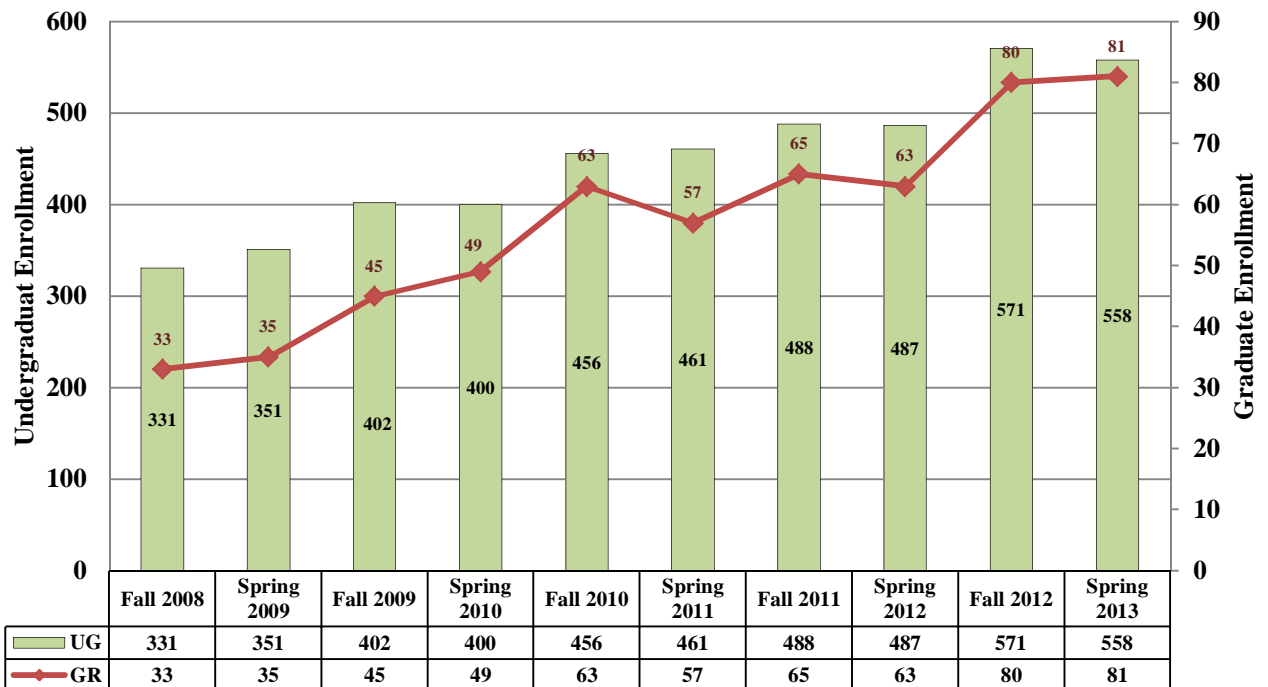
## Department: Humanities Majors



## Department: Public Affairs & Social Research Majors



## Department: Psychology & Communication Majors



# Texas A&M International University

## Enrollment by Level and Department

### Undergraduate - College of Arts & Sciences

Major	Dept	Semester									
		Fall 2008	Spring 2009	Fall 2009	Spring 2010	Fall 2010	Spring 2011	Fall 2011	Spring 2012	Fall 2012	Spring 2013
BIOLOGY, BA	BC	64	92	138	130	171	149	152	119	99	94
BIOLOGY, BS	BC	193	178	204	183	227	229	295	281	362	320
CHEMISTRY	BC	29	18	22	19	34	30	39	41	42	33
ENVIRONMENTAL SCIENCE	BC	9	9	15	14	15	19	19	18	9	7
SCIENCE, BS	BC	6	6	13	6	7	10	10	7	11	9
SCIENCE, BSIS	BC	0	0	2	2	7	5	6	4	3	2
<b>Total Dept: BC</b>		<b>301</b>	<b>303</b>	<b>394</b>	<b>354</b>	<b>461</b>	<b>442</b>	<b>521</b>	<b>470</b>	<b>526</b>	<b>465</b>
MATHEMATICS, BA	EMAP	63	63	93	82	101	87	90	70	62	59
MATHEMATICS, BS	EMAP	6	4	6	5	7	10	10	8	13	16
MATHEMATICS, BSIS	EMAP	20	23	24	33	33	32	31	29	19	9
PHYSICAL SCIENCE	EMAP	59	33	34	27	22	10	9	8	10	2
PRE-ENGINEERING	EMAP	0	20	33	47	117	102	114	113	151	135
SYSTEMS ENGINEERING	EMAP	5	11	21	28	51	53	67	66	86	87
<b>Total Dept: EMAP</b>		<b>153</b>	<b>154</b>	<b>211</b>	<b>222</b>	<b>331</b>	<b>294</b>	<b>321</b>	<b>294</b>	<b>341</b>	<b>308</b>
ART	FPA	33	35	30	38	49	54	68	66	84	87
ART, ALL LEVEL	FPA	25	18	25	27	34	33	33	26	21	18
MUSIC, BA	FPA	14	13	18	20	19	14	13	12	13	8
MUSIC, BM	FPA	52	47	52	47	50	57	58	53	59	52
<b>Total Dept: FPA</b>		<b>124</b>	<b>113</b>	<b>125</b>	<b>132</b>	<b>152</b>	<b>158</b>	<b>172</b>	<b>157</b>	<b>177</b>	<b>165</b>
ENGLISH	HUM	90	86	98	96	117	120	107	115	129	132
ENGLISH LANG & READING	HUM	12	11	11	8	7	8	6	1	5	3
ENGLISH SOCIAL STUDIES	HUM	2	2	2	2	1	0	1	1	1	2
HISTORY	HUM	56	63	64	74	73	73	84	80	87	87
SPANISH	HUM	39	36	51	56	54	64	70	75	80	76
<b>Total Dept: HUM</b>		<b>199</b>	<b>198</b>	<b>226</b>	<b>236</b>	<b>252</b>	<b>265</b>	<b>268</b>	<b>272</b>	<b>302</b>	<b>300</b>
COMPOSITE BAAS	PASR	37	42	45	37	42	38	38	38	26	20
CRIMINAL JUSTICE	PASR	326	301	348	382	439	437	518	481	570	541
LATIN AMERICAN STUDIES	PASR	1	1	0	0	0	0	0	0	0	0
POLITICAL SCIENCE	PASR	76	75	84	80	84	81	90	80	105	97
SOCIAL STUDIES	PASR	32	36	35	42	44	39	32	25	12	10
SOCIAL WORK	PASR	21	20	11	9	0	0	0	0	0	0
SOCIOLOGY	PASR	33	33	34	40	50	50	50	44	58	53
URBAN STUDIES	PASR	6	4	2	2	1	1	0	0	0	0
<b>Total Dept: PASR</b>		<b>532</b>	<b>512</b>	<b>559</b>	<b>592</b>	<b>660</b>	<b>646</b>	<b>728</b>	<b>668</b>	<b>771</b>	<b>721</b>
COMMUNICATION	PSCM	88	90	101	111	129	136	125	124	133	137
PSYCHOLOGY	PSCM	243	261	301	289	327	325	363	363	438	421
<b>Total Dept: PSCM</b>		<b>331</b>	<b>351</b>	<b>402</b>	<b>400</b>	<b>456</b>	<b>461</b>	<b>488</b>	<b>487</b>	<b>571</b>	<b>558</b>
UNDECIDED/NON-DEGREE	UND	1002	727	1043	866	1083	904	1122	976	1296	1144
<b>Total Dept: UND</b>		<b>1002</b>	<b>727</b>	<b>1043</b>	<b>866</b>	<b>1083</b>	<b>904</b>	<b>1122</b>	<b>976</b>	<b>1296</b>	<b>1144</b>
<b>Total Coll: COAS</b>		<b>2642</b>	<b>2358</b>	<b>2960</b>	<b>2802</b>	<b>3395</b>	<b>3170</b>	<b>3620</b>	<b>3324</b>	<b>3984</b>	<b>3661</b>

**Undergraduate - Sanchez School of Business**

Major	Dept	Semester									
		Fall 2008	Spring 2009	Fall 2009	Spring 2010	Fall 2010	Spring 2011	Fall 2011	Spring 2012	Fall 2012	Spring 2013
ACCOUNTING	IBFS	201	188	189	163	178	160	199	197	215	202
ECONOMICS	IBFS	30	31	32	30	28	21	39	41	41	46
FINANCE	IBFS	69	69	72	64	58	66	69	71	69	75
MARKETING	IBFS	69	70	68	58	82	83	86	65	81	68
<b>Total Dept: IBFS</b>		<b>369</b>	<b>358</b>	<b>361</b>	<b>315</b>	<b>346</b>	<b>330</b>	<b>393</b>	<b>374</b>	<b>406</b>	<b>391</b>
BUSINESS ADMINISTRATION	IBTS	272	227	262	227	221	210	247	232	245	214
MANAGEMENT	IBTS	120	104	133	119	136	118	126	109	115	106
MANAGEMENT INFO SYSTEMS	IBTS	120	102	94	77	76	78	73	68	75	69
<b>Total Dept: IBTS</b>		<b>512</b>	<b>433</b>	<b>489</b>	<b>423</b>	<b>433</b>	<b>406</b>	<b>446</b>	<b>409</b>	<b>435</b>	<b>389</b>
UNDECIDED/NON-DEGREE	UND	23	23	28	27	26	23	20	12	33	23
<b>Total Dept: UND</b>		<b>23</b>	<b>23</b>	<b>28</b>	<b>27</b>	<b>26</b>	<b>23</b>	<b>20</b>	<b>12</b>	<b>33</b>	<b>23</b>
<b>Total Coll: COBA</b>		<b>904</b>	<b>814</b>	<b>878</b>	<b>765</b>	<b>805</b>	<b>759</b>	<b>859</b>	<b>795</b>	<b>874</b>	<b>803</b>

**Undergraduate - College of Education**

Major	Dept	Semester									
		Fall 2008	Spring 2009	Fall 2009	Spring 2010	Fall 2010	Spring 2011	Fall 2011	Spring 2012	Fall 2012	Spring 2013
BIS BILINDUAL EDUCATION	CP	21	19	56	99	180	214	213	228	186	177
BIS EARLY CHILDHOOD	CP	118	107	129	109	137	114	86	61	38	26
BIS EARLY CHILDHOOD-BIL	CP	442	459	436	369	244	196	136	88	39	32
BIS EARLY CHILDHOOD-RDG	CP	46	36	30	35	29	24	38	41	63	53
BS KINESIOLOGY ALL LEVEL	CP	110	101	129	139	151	160	163	154	108	91
BS KINESIOLOGY NON CERT	CP	49	57	63	62	81	91	97	112	160	158
<b>Total Dept: CP</b>		<b>786</b>	<b>779</b>	<b>843</b>	<b>813</b>	<b>822</b>	<b>799</b>	<b>733</b>	<b>684</b>	<b>594</b>	<b>537</b>
BIS SPECIAL EDUCATION	PPRO	73	72	70	75	76	79	76	70	71	64
BS COMM DISORDERS	PPRO	66	96	150	181	234	267	339	363	372	363
<b>Total Dept: PPRO</b>		<b>139</b>	<b>168</b>	<b>220</b>	<b>256</b>	<b>310</b>	<b>346</b>	<b>415</b>	<b>433</b>	<b>443</b>	<b>427</b>
UNDECIDED/NON-DEGREE	UND	21	9	14	10	18	5	5	4	11	4
<b>Total Dept: UND</b>		<b>21</b>	<b>9</b>	<b>14</b>	<b>10</b>	<b>18</b>	<b>5</b>	<b>5</b>	<b>4</b>	<b>11</b>	<b>4</b>
<b>Total Coll: COED</b>		<b>946</b>	<b>956</b>	<b>1077</b>	<b>1079</b>	<b>1150</b>	<b>1150</b>	<b>1153</b>	<b>1121</b>	<b>1048</b>	<b>968</b>

**Undergraduate - College of Nursing&Health Sci**

Major	Dept	Semester									
		Fall 2008	Spring 2009	Fall 2009	Spring 2010	Fall 2010	Spring 2011	Fall 2011	Spring 2012	Fall 2012	Spring 2013
NURSING	NURS	304	320	397	378	472	445	466	417	476	457
<b>Total Dept: NURS</b>		<b>304</b>	<b>320</b>	<b>397</b>	<b>378</b>	<b>472</b>	<b>445</b>	<b>466</b>	<b>417</b>	<b>476</b>	<b>457</b>
UNDECIDED/NON-DEGREE	UND	1	0	2	0	1	1	1	0	0	0
<b>Total Dept: UND</b>		<b>1</b>	<b>0</b>	<b>2</b>	<b>0</b>	<b>1</b>	<b>1</b>	<b>1</b>	<b>0</b>	<b>0</b>	<b>0</b>
<b>Total Coll: NURS</b>		<b>305</b>	<b>320</b>	<b>399</b>	<b>378</b>	<b>473</b>	<b>446</b>	<b>467</b>	<b>417</b>	<b>476</b>	<b>457</b>
<b>Total Level: Undergraduate</b>		<b>4797</b>	<b>4448</b>	<b>5314</b>	<b>5024</b>	<b>5823</b>	<b>5525</b>	<b>6099</b>	<b>5657</b>	<b>6382</b>	<b>5889</b>

**Graduate - College of Arts & Sciences**

		Semester									
Major	Dept	Fall 2008	Spring 2009	Fall 2009	Spring 2010	Fall 2010	Spring 2011	Fall 2011	Spring 2012	Fall 2012	Spring 2013
BIOLOGY	BC	13	14	15	23	23	35	29	26	28	26
<b>Total Dept: BC</b>		<b>13</b>	<b>14</b>	<b>15</b>	<b>23</b>	<b>23</b>	<b>35</b>	<b>29</b>	<b>26</b>	<b>28</b>	<b>26</b>
MATHEMATICS	EMAP	8	4	11	15	14	14	12	12	11	8
<b>Total Dept: EMAP</b>		<b>8</b>	<b>4</b>	<b>11</b>	<b>15</b>	<b>14</b>	<b>14</b>	<b>12</b>	<b>12</b>	<b>11</b>	<b>8</b>
ENGLISH	HUM	20	23	32	26	21	21	19	21	19	17
HISTORY	HUM	6	13	12	7	11	11	9	8	5	6
HISTORY & POLITICAL THOUGHT	HUM	0	0	0	0	0	0	0	0	13	11
LANGUAGE, LIT & TRANS	HUM	0	0	0	0	0	0	0	0	2	5
SPANISH	HUM	10	13	20	21	16	17	18	19	14	10
<b>Total Dept: HUM</b>		<b>36</b>	<b>49</b>	<b>64</b>	<b>54</b>	<b>48</b>	<b>49</b>	<b>46</b>	<b>48</b>	<b>53</b>	<b>49</b>
CRIMINAL JUSTICE	PASR	27	33	38	37	40	43	34	24	31	29
POLITICAL SCIENCE	PASR	2	6	7	7	7	11	13	8	4	2
PUBLIC ADMINISTRATION	PASR	50	52	43	39	38	28	30	26	26	23
SOCIOLOGY	PASR	13	16	18	20	24	18	19	22	12	7
<b>Total Dept: PASR</b>		<b>92</b>	<b>107</b>	<b>106</b>	<b>103</b>	<b>109</b>	<b>100</b>	<b>96</b>	<b>80</b>	<b>73</b>	<b>61</b>
COUNSELING PSYCH	PSCM	29	31	37	39	49	48	55	52	61	62
PSYCHOLOGY	PSCM	4	4	8	10	14	9	10	11	19	19
<b>Total Dept: PSCM</b>		<b>33</b>	<b>35</b>	<b>45</b>	<b>49</b>	<b>63</b>	<b>57</b>	<b>65</b>	<b>63</b>	<b>80</b>	<b>81</b>
UNDECIDED/NON-DEGREE	UND	27	24	18	11	18	9	6	17	3	4
<b>Total Dept: UND</b>		<b>27</b>	<b>24</b>	<b>18</b>	<b>11</b>	<b>18</b>	<b>9</b>	<b>6</b>	<b>17</b>	<b>3</b>	<b>4</b>
<b>Total Coll: COAS</b>		<b>209</b>	<b>233</b>	<b>259</b>	<b>255</b>	<b>275</b>	<b>264</b>	<b>254</b>	<b>246</b>	<b>248</b>	<b>229</b>

**Graduate - Sanchez School of Business**

		Semester									
Major	Dept	Fall 2008	Spring 2009	Fall 2009	Spring 2010	Fall 2010	Spring 2011	Fall 2011	Spring 2012	Fall 2012	Spring 2013
ACCOUNTING	IBFS	10	14	16	16	15	19	19	12	15	11
FINANCE	IBFS	12	14	11	9	12	15	12	8	4	3
INTERNATIONAL TRADE	IBFS	12	15	10	9	14	14	7	10	4	4
INTNL BANKING, MBA	IBFS	0	0	0	0	0	0	5	3	11	11
INTNL BANKING, MBA-IBK	IBFS	5	6	4	5	5	5	2	1	1	0
MARKETING	IBFS	4	5	8	12	11	8	12	9	8	5
PROF ACCOUNTANCY	IBFS	31	34	42	49	39	40	38	34	36	27
<b>Total Dept: IBFS</b>		<b>74</b>	<b>88</b>	<b>91</b>	<b>100</b>	<b>96</b>	<b>101</b>	<b>95</b>	<b>77</b>	<b>79</b>	<b>61</b>
BUSINESS ADMINISTRATION	IBTS	11	25	23	6	5	2	7	6	6	2
INFORMATION SYSTEMS, MBA	IBTS	5	6	5	5	6	7	5	4	5	1
INFORMATION SYSTEMS, MS	IBTS	69	55	70	41	42	32	27	23	19	28
INTERNATIONAL BUSINESS, PHD	IBTS	20	21	25	21	19	19	22	20	20	17
INTERNATIONAL LOGISTICS	IBTS	2	2	3	5	3	3	2	1	1	1
MANAGEMENT	IBTS	31	48	60	68	65	61	55	48	50	63
MBA INTERNATIONAL BUSINESS	IBTS	88	99	93	106	84	79	80	79	77	77
<b>Total Dept: IBTS</b>		<b>226</b>	<b>256</b>	<b>279</b>	<b>252</b>	<b>224</b>	<b>203</b>	<b>198</b>	<b>181</b>	<b>178</b>	<b>189</b>
UNDECIDED/NON-DEGREE	UND	59	23	14	3	3	3	2	4	6	3
<b>Total Dept: UND</b>		<b>59</b>	<b>23</b>	<b>14</b>	<b>3</b>	<b>3</b>	<b>3</b>	<b>2</b>	<b>4</b>	<b>6</b>	<b>3</b>
<b>Total Coll: COBA</b>		<b>359</b>	<b>367</b>	<b>384</b>	<b>355</b>	<b>323</b>	<b>307</b>	<b>295</b>	<b>262</b>	<b>263</b>	<b>253</b>



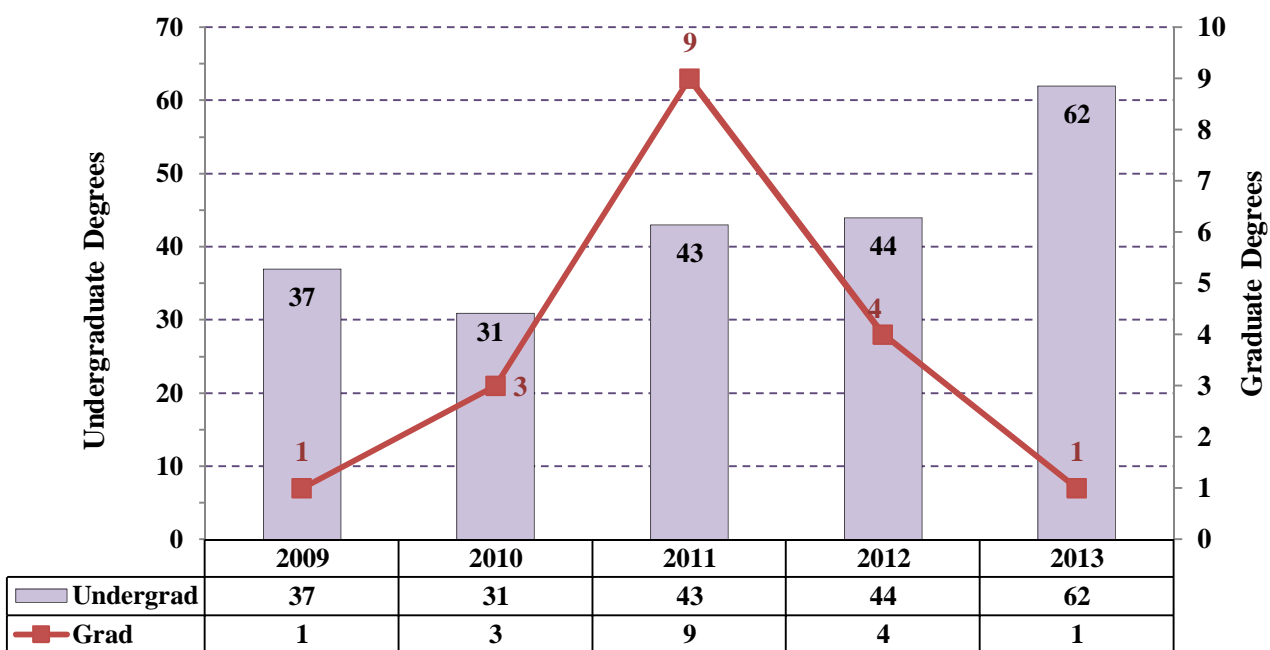
**Graduate - College of Education**

Major	Dept	Semester									
		Fall 2008	Spring 2009	Fall 2009	Spring 2010	Fall 2010	Spring 2011	Fall 2011	Spring 2012	Fall 2012	Spring 2013
BILINGUAL EDUCATION	CP	19	15	16	23	25	21	14	13	14	8
CURRICULUM & INSTRUCTION	CP	48	57	43	45	42	34	27	27	24	46
EARLY CHILDHOOD ED	CP	2	3	5	3	4	3	4	3	3	0
<b>Total Dept: CP</b>		<b>69</b>	<b>75</b>	<b>64</b>	<b>71</b>	<b>71</b>	<b>58</b>	<b>45</b>	<b>43</b>	<b>41</b>	<b>54</b>
ADMIN-MIDMANAGEMENT	PPRO	138	125	101	95	81	87	68	61	82	81
INTERVENTIONS FOR AUTISM	PPRO	0	0	0	0	0	0	3	2	4	9
READING	PPRO	25	21	18	15	8	11	11	6	2	5
SCHOOL COUNSELING	PPRO	65	64	65	68	60	61	58	43	39	33
SPECIAL EDUCATION	PPRO	34	34	45	46	42	46	31	33	26	21
SUPERINTENDENCY	PPRO	0	4	4	4	7	6	2	2	5	6
<b>Total Dept: PPRO</b>		<b>262</b>	<b>248</b>	<b>233</b>	<b>228</b>	<b>198</b>	<b>211</b>	<b>173</b>	<b>147</b>	<b>158</b>	<b>155</b>
UNDECIDED/NON-DEGREE	UND	134	152	134	143	136	164	142	148	94	70
<b>Total Dept: UND</b>		<b>134</b>	<b>152</b>	<b>134</b>	<b>143</b>	<b>136</b>	<b>164</b>	<b>142</b>	<b>148</b>	<b>94</b>	<b>70</b>
<b>Total Coll: COED</b>		<b>465</b>	<b>475</b>	<b>431</b>	<b>442</b>	<b>405</b>	<b>433</b>	<b>360</b>	<b>338</b>	<b>293</b>	<b>279</b>

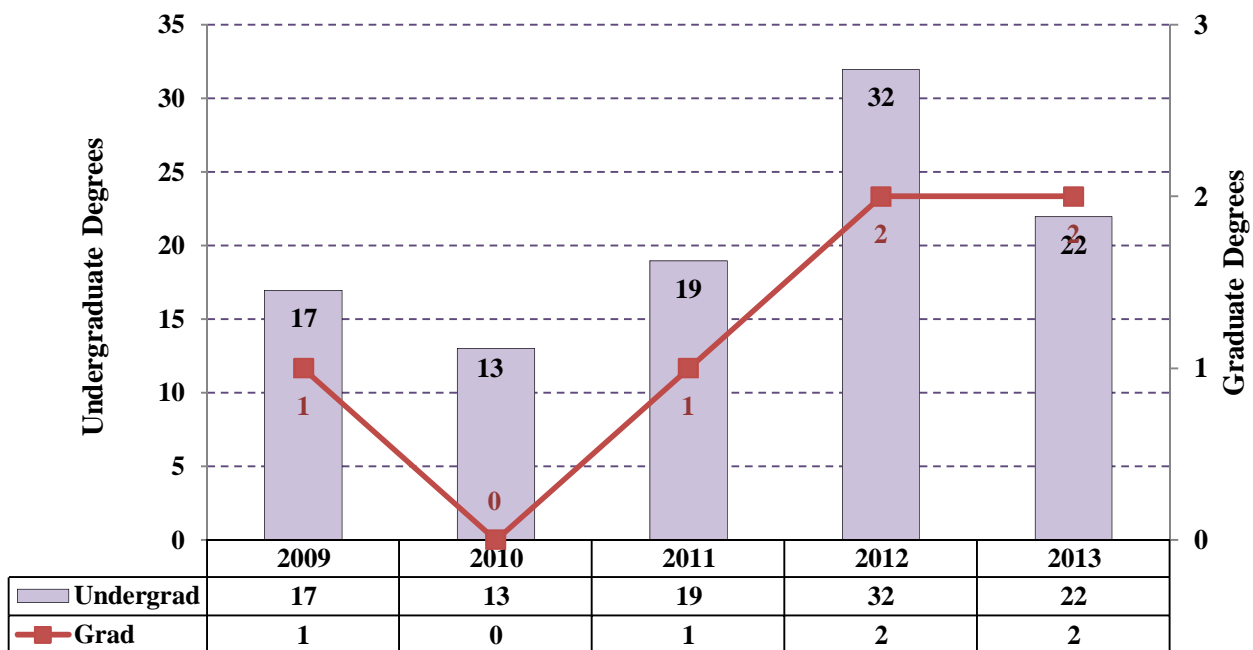
**Graduate - College of Nursing&Health Sci**

Major	Dept	Semester									
		Fall 2008	Spring 2009	Fall 2009	Spring 2010	Fall 2010	Spring 2011	Fall 2011	Spring 2012	Fall 2012	Spring 2013
NURSING	NURS	30	31	30	12	26	14	29	29	26	16
<b>Total Dept: NURS</b>		<b>30</b>	<b>31</b>	<b>30</b>	<b>12</b>	<b>26</b>	<b>14</b>	<b>29</b>	<b>29</b>	<b>26</b>	<b>16</b>
<b>Total Coll: NURS</b>		<b>30</b>	<b>31</b>	<b>30</b>	<b>12</b>	<b>26</b>	<b>14</b>	<b>29</b>	<b>29</b>	<b>26</b>	<b>16</b>
<b>Total Level: Graduate</b>		<b>1063</b>	<b>1106</b>	<b>1104</b>	<b>1064</b>	<b>1029</b>	<b>1018</b>	<b>938</b>	<b>875</b>	<b>830</b>	<b>777</b>
<b>TOTAL</b>		<b>5860</b>	<b>5554</b>	<b>6418</b>	<b>6088</b>	<b>6852</b>	<b>6543</b>	<b>7037</b>	<b>6532</b>	<b>7212</b>	<b>6666</b>

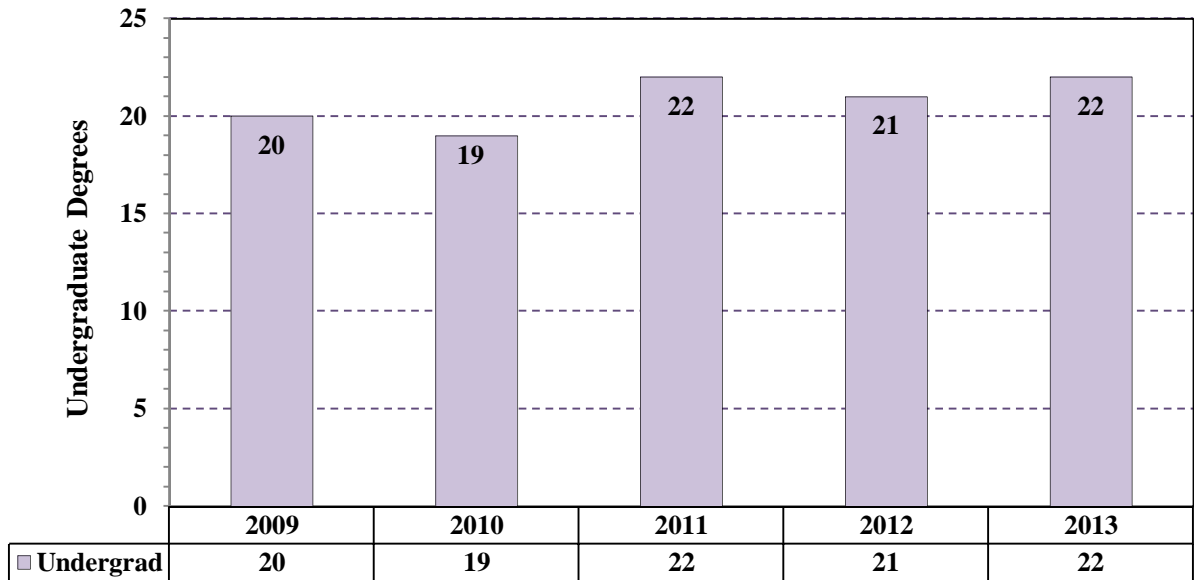
### Degrees Awarded Department: Biology & Chemistry



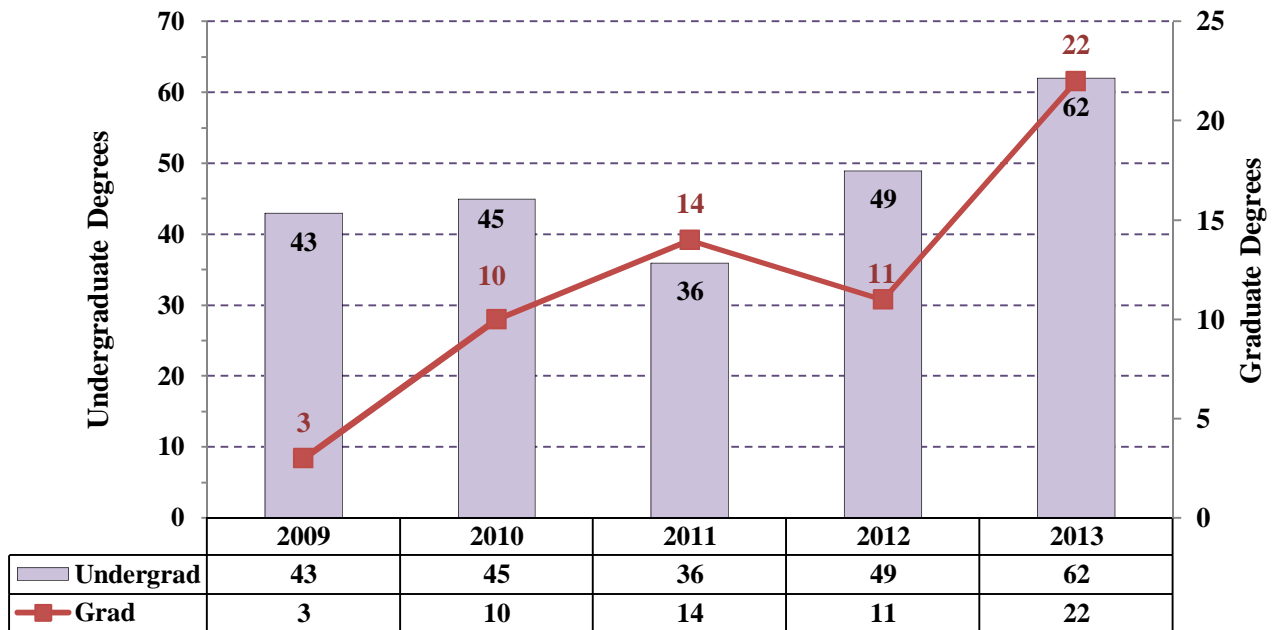
### Degrees Awarded Department: Engineering, Mathematics & Physics



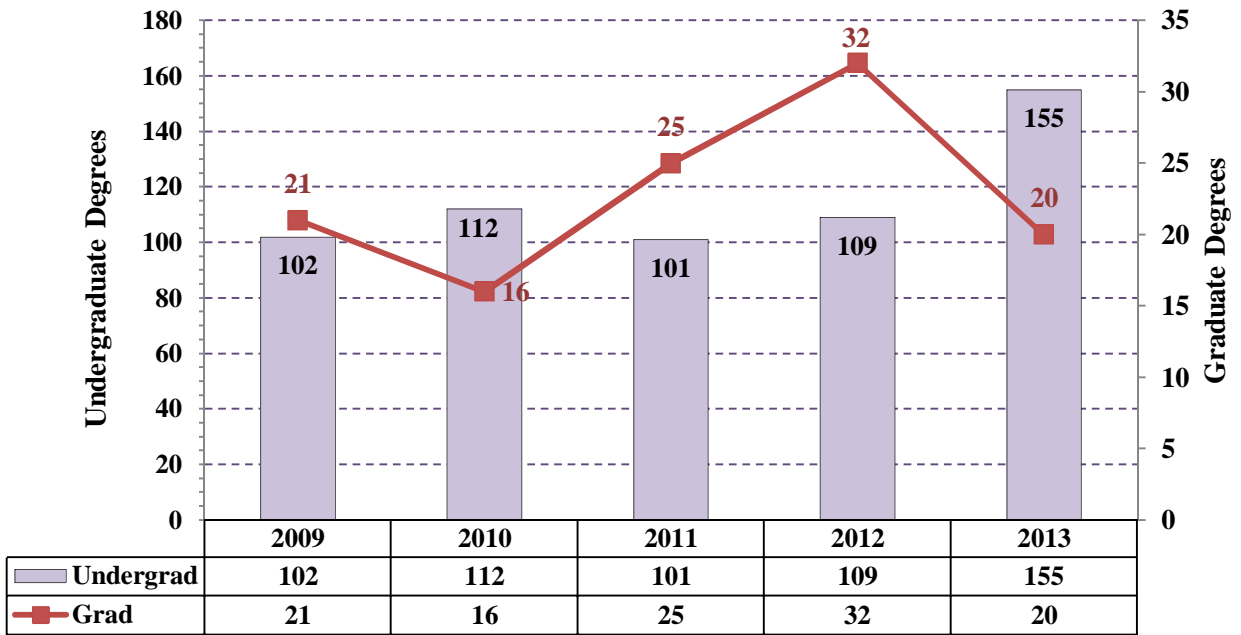
## Degrees Awarded Department: Fine and Performing Arts



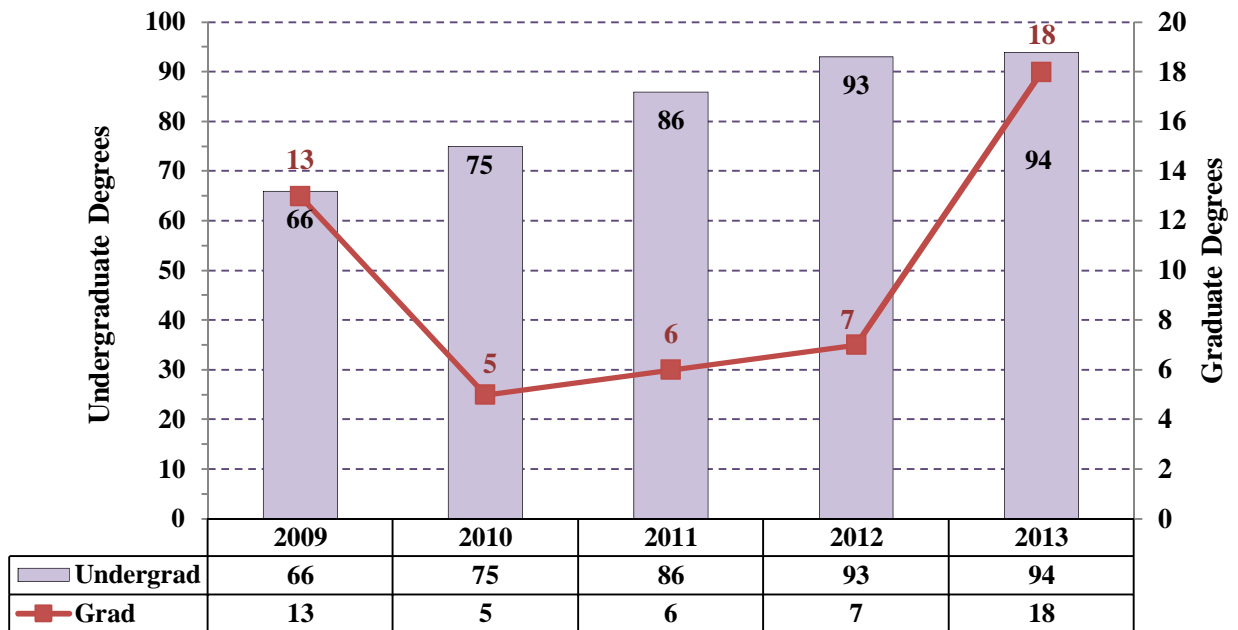
## Degrees Awarded Department: Humanities



## Degrees Awarded Department: Public Affairs & Social Research



## Degrees Awarded Department: Psychology & Communication



**Texas A&M International University**  
**Degrees Awarded by Department and Level**

**Undergraduate - College of Arts & Sciences**

Degree	Dept	Semester									Fall 2012	Spring 2013	Summer II 2013
		Fall 2009	Spring 2010	Summer II 2010	Fall 2010	Spring 2011	Summer II 2011	Fall 2011	Spring 2012	Summer II 2012			
BA BIOLOGY	BC	0	1	1	0	5	0	2	1	1	3	10	1
BS BIOLOGY	BC	6	20	2	1	27	6	9	23	2	9	30	3
BS CHEMISTRY	BC	1	0	0	1	0	0	2	1	0	2	0	1
BS ENVIRONMENTAL SCIENCE	BC	0	0	0	0	1	1	0	1	0	0	2	0
BS SCIENCE	BC	0	0	0	0	1	0	1	0	0	0	0	0
BSIS SCIENCE	BC	0	0	0	0	0	0	1	0	0	0	1	0
<b>Total Dept: BC</b>		<b>7</b>	<b>21</b>	<b>3</b>	<b>2</b>	<b>34</b>	<b>7</b>	<b>15</b>	<b>26</b>	<b>3</b>	<b>14</b>	<b>43</b>	<b>5</b>
BA MATHEMATICS	EMAP	7	1	1	4	5	0	5	7	0	3	2	0
BS MATHEMATICS	EMAP	0	1	0	0	1	0	2	1	0	0	0	0
BS SYSTEMS ENGR	EMAP	0	0	0	0	0	0	5	1	0	2	9	2
BSIS MATHEMATICS	EMAP	0	3	0	6	3	0	3	7	1	2	2	0
<b>Total Dept: EMAP</b>		<b>7</b>	<b>5</b>	<b>1</b>	<b>10</b>	<b>9</b>	<b>0</b>	<b>15</b>	<b>16</b>	<b>1</b>	<b>7</b>	<b>13</b>	<b>2</b>
BA ART	FPA	4	4	0	3	4	1	1	9	2	6	8	0
BA ART - ALL LEVEL	FPA	0	0	0	3	4	0	2	1	0	2	0	0
BA MUSIC	FPA	0	1	0	0	0	1	0	0	1	1	0	0
BM MUSIC	FPA	4	2	0	0	2	2	0	5	0	0	2	1
BM MUSIC - ALL LEVEL	FPA	2	2	0	0	2	0	0	0	0	1	1	0
<b>Total Dept: FPA</b>		<b>10</b>	<b>9</b>	<b>0</b>	<b>6</b>	<b>12</b>	<b>4</b>	<b>3</b>	<b>15</b>	<b>3</b>	<b>10</b>	<b>11</b>	<b>1</b>
BA ENGLISH	HUM	10	8	3	6	11	1	6	5	1	9	15	4
BA HISTORY	HUM	3	7	3	6	2	1	4	13	3	8	6	1
BA SPANISH	HUM	1	6	3	1	5	1	5	11	1	8	11	0
BSIS ENGLISH, L ARTS, READING	HUM	0	0	1	2	0	0	0	0	0	0	0	0
<b>Total Dept: HUM</b>		<b>14</b>	<b>21</b>	<b>10</b>	<b>15</b>	<b>18</b>	<b>3</b>	<b>15</b>	<b>29</b>	<b>5</b>	<b>25</b>	<b>32</b>	<b>5</b>
BA PLANNING & ADMINISTRATION	PASR	0	1	0	0	1	0	0	0	0	0	0	0
BA POLITICAL SCIENCE	PASR	5	8	3	5	9	1	5	8	1	4	10	3
BA SOCIOLOGY	PASR	6	1	1	4	4	1	6	0	0	4	4	0
BAAS APPLIED ARTS & SCIENCES	PASR	0	3	2	5	3	1	0	5	1	4	3	0
BS CRIMINAL JUSTICE	PASR	16	43	7	35	26	5	25	41	11	50	57	14
BS SOCIAL STUDIES	PASR	2	3	0	0	1	0	1	5	0	0	2	0
BS SOCIAL WORK	PASR	1	9	0	0	0	0	0	0	0	0	0	0
BSIS SOCIAL STUDIES	PASR	0	1	0	0	0	0	0	0	0	0	0	0
<b>Total Dept: PASR</b>		<b>30</b>	<b>69</b>	<b>13</b>	<b>49</b>	<b>44</b>	<b>8</b>	<b>37</b>	<b>59</b>	<b>13</b>	<b>62</b>	<b>76</b>	<b>17</b>
BA COMMUNICATION	PSCM	7	6	1	5	15	1	6	15	3	6	9	2
BA PSYCHOLOGY	PSCM	28	27	6	27	31	7	30	34	5	36	33	8
<b>Total Dept: PSCM</b>		<b>35</b>	<b>33</b>	<b>7</b>	<b>32</b>	<b>46</b>	<b>8</b>	<b>36</b>	<b>49</b>	<b>8</b>	<b>42</b>	<b>42</b>	<b>10</b>
<b>Total Coll: AS</b>		<b>103</b>	<b>158</b>	<b>34</b>	<b>114</b>	<b>163</b>	<b>30</b>	<b>121</b>	<b>194</b>	<b>33</b>	<b>160</b>	<b>217</b>	<b>40</b>

### Undergraduate - College of Business Administration

Degree	Dept	Semester											
		Fall 2009	Spring 2010	Summer II 2010	Fall 2010	Spring 2011	Summer II 2011	Fall 2011	Spring 2012	Summer II 2012	Fall 2012	Spring 2013	Summer II 2013
BBA ACCOUNTING	IBFS	26	21	3	24	16	2	13	16	1	19	19	1
BBA FINANCE	IBFS	14	13	2	9	7	0	7	11	3	4	15	2
BBA INTERNATIONAL ECONOMICS	IBFS	4	2	0	3	1	0	1	6	1	1	5	1
BBA MARKETING	IBFS	16	5	0	5	14	2	9	7	0	5	8	3
<b>Total Dept: IBFS</b>		<b>60</b>	<b>41</b>	<b>5</b>	<b>41</b>	<b>38</b>	<b>4</b>	<b>30</b>	<b>40</b>	<b>5</b>	<b>29</b>	<b>47</b>	<b>7</b>
BBA BUSINESS ADMINISTRATION	IBTS	18	12	2	3	18	0	10	16	8	17	21	4
BBA COMP/MGT INFO SYSTEMS	IBTS	16	6	1	8	11	1	9	4	2	13	4	0
BBA MANAGEMENT	IBTS	23	17	5	29	12	3	18	21	1	17	13	2
<b>Total Dept: IBTS</b>		<b>57</b>	<b>35</b>	<b>8</b>	<b>40</b>	<b>41</b>	<b>4</b>	<b>37</b>	<b>41</b>	<b>11</b>	<b>47</b>	<b>38</b>	<b>6</b>
<b>Total Coll: BA</b>		<b>117</b>	<b>76</b>	<b>13</b>	<b>81</b>	<b>79</b>	<b>8</b>	<b>67</b>	<b>81</b>	<b>16</b>	<b>76</b>	<b>85</b>	<b>13</b>

### Undergraduate - College of Education

Degree	Dept	Semester											
		Fall 2009	Spring 2010	Summer II 2010	Fall 2010	Spring 2011	Summer II 2011	Fall 2011	Spring 2012	Summer II 2012	Fall 2012	Spring 2013	Summer II 2013
BS FITNESS & SPORTS(KINE)	CP	10	5	4	1	12	3	11	11	3	26	14	7
BS FITNESS & SPORTS(KINE) - ALL LEVEL	CP	6	5	2	8	12	1	6	12	1	1	4	0
BSIS BILINGUAL GENERALIST	CP	2	2	0	1	1	0	0	8	0	7	12	0
BSIS EARLY CHILDHOOD	CP	9	4	6	5	10	1	9	11	1	1	3	0
BSIS EARLY CHILDHOOD BILINGUAL	CP	45	82	10	50	49	6	43	32	1	3	12	0
BSIS EARLY CHILDHOOD READING	CP	6	6	2	2	6	0	6	0	1	1	1	0
<b>Total Dept: CP</b>		<b>78</b>	<b>104</b>	<b>24</b>	<b>67</b>	<b>90</b>	<b>11</b>	<b>75</b>	<b>74</b>	<b>7</b>	<b>39</b>	<b>46</b>	<b>7</b>
BS COMMUNICATION SCIENCES	PPRO	8	13	2	17	27	6	6	31	11	29	38	6
BS SPECIAL EDUCATION	PPRO	9	7	1	4	10	0	10	9	0	5	4	0
<b>Total Dept: PPRO</b>		<b>17</b>	<b>20</b>	<b>3</b>	<b>21</b>	<b>37</b>	<b>6</b>	<b>16</b>	<b>40</b>	<b>11</b>	<b>34</b>	<b>42</b>	<b>6</b>
<b>Total Coll: ED</b>		<b>95</b>	<b>124</b>	<b>27</b>	<b>88</b>	<b>127</b>	<b>17</b>	<b>91</b>	<b>114</b>	<b>18</b>	<b>73</b>	<b>88</b>	<b>13</b>

### Undergraduate - Canseco School of Nursing

Degree	Dept	Semester											
		Fall 2009	Spring 2010	Summer II 2010	Fall 2010	Spring 2011	Summer II 2011	Fall 2011	Spring 2012	Summer II 2012	Fall 2012	Spring 2013	Summer II 2013
BS NURSING	NURS	2	43	6	0	45	14	0	41	29	3	49	19
<b>Total Dept: NURS</b>		<b>2</b>	<b>43</b>	<b>6</b>	<b>0</b>	<b>45</b>	<b>14</b>	<b>0</b>	<b>41</b>	<b>29</b>	<b>3</b>	<b>49</b>	<b>19</b>
<b>Total Coll: NH</b>		<b>2</b>	<b>43</b>	<b>6</b>	<b>0</b>	<b>45</b>	<b>14</b>	<b>0</b>	<b>41</b>	<b>29</b>	<b>3</b>	<b>49</b>	<b>19</b>
<b>Total Level: Undergraduate</b>		<b>317</b>	<b>401</b>	<b>80</b>	<b>283</b>	<b>414</b>	<b>69</b>	<b>279</b>	<b>430</b>	<b>96</b>	<b>312</b>	<b>439</b>	<b>85</b>

**Graduate - College of Arts & Sciences**

Degree	Dept	Semester											
		Fall 2009	Spring 2010	Summer II 2010	Fall 2010	Spring 2011	Summer II 2011	Fall 2011	Spring 2012	Summer II 2012	Fall 2012	Spring 2013	Summer II 2013
MS BIOLOGY	BC	0	3	0	2	4	3	1	1	2	1	0	0
<b>Total Dept: BC</b>		<b>0</b>	<b>3</b>	<b>0</b>	<b>2</b>	<b>4</b>	<b>3</b>	<b>1</b>	<b>1</b>	<b>2</b>	<b>1</b>	<b>0</b>	<b>0</b>
MS MATHEMATICS	EMAP	0	0	0	0	0	1	1	1	0	0	2	0
<b>Total Dept: EMAP</b>		<b>0</b>	<b>0</b>	<b>0</b>	<b>0</b>	<b>0</b>	<b>1</b>	<b>1</b>	<b>1</b>	<b>0</b>	<b>0</b>	<b>2</b>	<b>0</b>
MA ENGLISH	HUM	3	3	1	7	2	1	4	0	0	4	5	2
MA HISTORY	HUM	1	0	0	0	1	0	2	1	0	2	1	0
MA SPANISH	HUM	0	2	0	2	1	0	0	4	0	3	4	1
<b>Total Dept: HUM</b>		<b>4</b>	<b>5</b>	<b>1</b>	<b>9</b>	<b>4</b>	<b>1</b>	<b>6</b>	<b>5</b>	<b>0</b>	<b>9</b>	<b>10</b>	<b>3</b>
MA POLITICAL SCIENCE	PASR	0	1	0	0	2	0	3	2	0	2	0	0
MA SOCIOLOGY	PASR	0	0	0	5	2	0	1	7	0	2	0	1
MPADM PUBLIC ADMINISTRATION	PASR	6	1	0	8	3	0	9	1	0	6	4	0
MS CRIMINAL JUSTICE	PASR	3	5	0	2	3	0	6	2	1	2	2	1
<b>Total Dept: PASR</b>		<b>9</b>	<b>7</b>	<b>0</b>	<b>15</b>	<b>10</b>	<b>0</b>	<b>19</b>	<b>12</b>	<b>1</b>	<b>12</b>	<b>6</b>	<b>2</b>
MA COUNSELING PSYCHOLOGY	PSCM	2	2	0	0	4	0	2	4	0	13	4	0
MS PSYCHOLOGY	PSCM	0	0	1	1	1	0	0	0	1	1	0	0
<b>Total Dept: PSCM</b>		<b>2</b>	<b>2</b>	<b>1</b>	<b>1</b>	<b>5</b>	<b>0</b>	<b>2</b>	<b>4</b>	<b>1</b>	<b>14</b>	<b>4</b>	<b>0</b>
<b>Total Coll: AS</b>		<b>15</b>	<b>17</b>	<b>2</b>	<b>27</b>	<b>23</b>	<b>5</b>	<b>29</b>	<b>23</b>	<b>4</b>	<b>36</b>	<b>22</b>	<b>5</b>

**Graduate - College of Business Administration**

Degree	Dept	Semester											
		Fall 2009	Spring 2010	Summer II 2010	Fall 2010	Spring 2011	Summer II 2011	Fall 2011	Spring 2012	Summer II 2012	Fall 2012	Spring 2013	Summer II 2013
MBA ACCOUNTING	IBFS	1	0	0	2	0	2	3	0	0	1	4	2
MBA FINANCE	IBFS	2	2	2	3	3	0	4	1	1	1	0	0
MBA INTERNATIONAL BANKING	IBFS	0	0	0	0	0	0	5	0	0	0	2	2
MBA INTERNATIONAL TRADE	IBFS	1	0	0	1	4	2	1	3	1	1	0	1
MBA MARKETING	IBFS	0	0	0	1	2	0	0	1	1	2	2	0
MBA-IBK INTERNATIONAL BANKING	IBFS	1	1	0	0	1	0	0	0	0	0	0	0
MPACC PROFESSIONAL ACCOUNTANCY	IBFS	2	14	1	3	6	0	6	4	1	13	5	0
<b>Total Dept: IBFS</b>		<b>7</b>	<b>17</b>	<b>3</b>	<b>10</b>	<b>16</b>	<b>4</b>	<b>19</b>	<b>9</b>	<b>4</b>	<b>18</b>	<b>13</b>	<b>5</b>
MBA INFORMATION SYSTEMS	IBTS	1	0	1	1	1	1	1	0	0	1	0	0
MBA INTERNATIONAL BUSINESS	IBTS	26	27	10	21	12	14	27	14	8	26	8	7
MBA MANAGEMENT	IBTS	8	9	1	7	10	7	9	6	4	8	6	3
MS INFORMATION SYSTEMS	IBTS	37	8	1	20	8	1	10	7	2	4	4	0
PHD INTERNATIONAL BUSINESS	IBTS	2	4	0	0	2	0	1	2	2	2	1	0
<b>Total Dept: IBTS</b>		<b>74</b>	<b>48</b>	<b>13</b>	<b>49</b>	<b>33</b>	<b>23</b>	<b>48</b>	<b>29</b>	<b>16</b>	<b>41</b>	<b>19</b>	<b>10</b>
<b>Total Coll: BA</b>		<b>81</b>	<b>65</b>	<b>16</b>	<b>59</b>	<b>49</b>	<b>27</b>	<b>67</b>	<b>38</b>	<b>20</b>	<b>59</b>	<b>32</b>	<b>15</b>

**Graduate - College of Education**

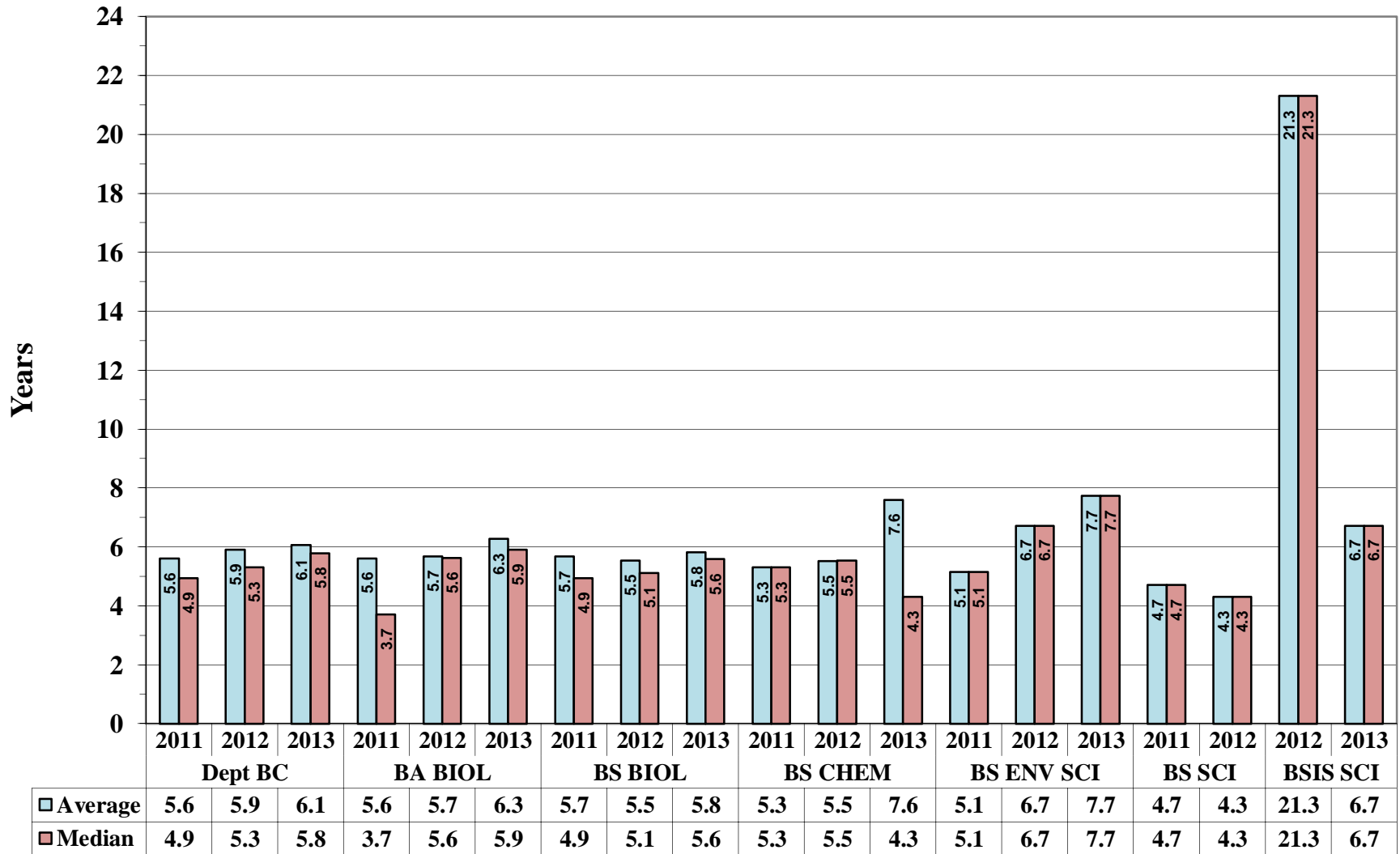
Degree	Dept	Semester											
		Fall 2009	Spring 2010	Summer II 2010	Fall 2010	Spring 2011	Summer II 2011	Fall 2011	Spring 2012	Summer II 2012	Fall 2012	Spring 2013	Summer II 2013
MS CURRICULUM & INSTRUCTION	CP	6	4	5	5	7	0	4	3	3	4	3	0
MSED BILINGUAL ED	CP	0	2	2	3	4	0	1	2	0	0	3	1
MSED EARLY CHILDHOOD ED	CP	0	0	0	0	0	0	0	0	0	1	0	0
<b>Total Dept: CP</b>		<b>6</b>	<b>6</b>	<b>7</b>	<b>8</b>	<b>11</b>	<b>0</b>	<b>5</b>	<b>5</b>	<b>3</b>	<b>5</b>	<b>6</b>	<b>1</b>
MS GENERIC SPECIAL EDUCATION	PPRO	1	3	1	0	8	0	4	8	0	4	11	2
MS SCHOOL COUNSELING	PPRO	6	13	2	5	6	1	6	0	4	7	6	4
MSED ED ADMINISTRATION	PPRO	11	20	15	6	9	6	14	14	5	17	20	10
MSED READING	PPRO	1	2	0	1	0	0	2	1	1	0	1	0
<b>Total Dept: PPRO</b>		<b>19</b>	<b>38</b>	<b>18</b>	<b>12</b>	<b>23</b>	<b>7</b>	<b>26</b>	<b>23</b>	<b>10</b>	<b>28</b>	<b>38</b>	<b>16</b>
<b>Total Coll: ED</b>		<b>25</b>	<b>44</b>	<b>25</b>	<b>20</b>	<b>34</b>	<b>7</b>	<b>31</b>	<b>28</b>	<b>13</b>	<b>33</b>	<b>44</b>	<b>17</b>

**Graduate - Canseco School of Nursing**

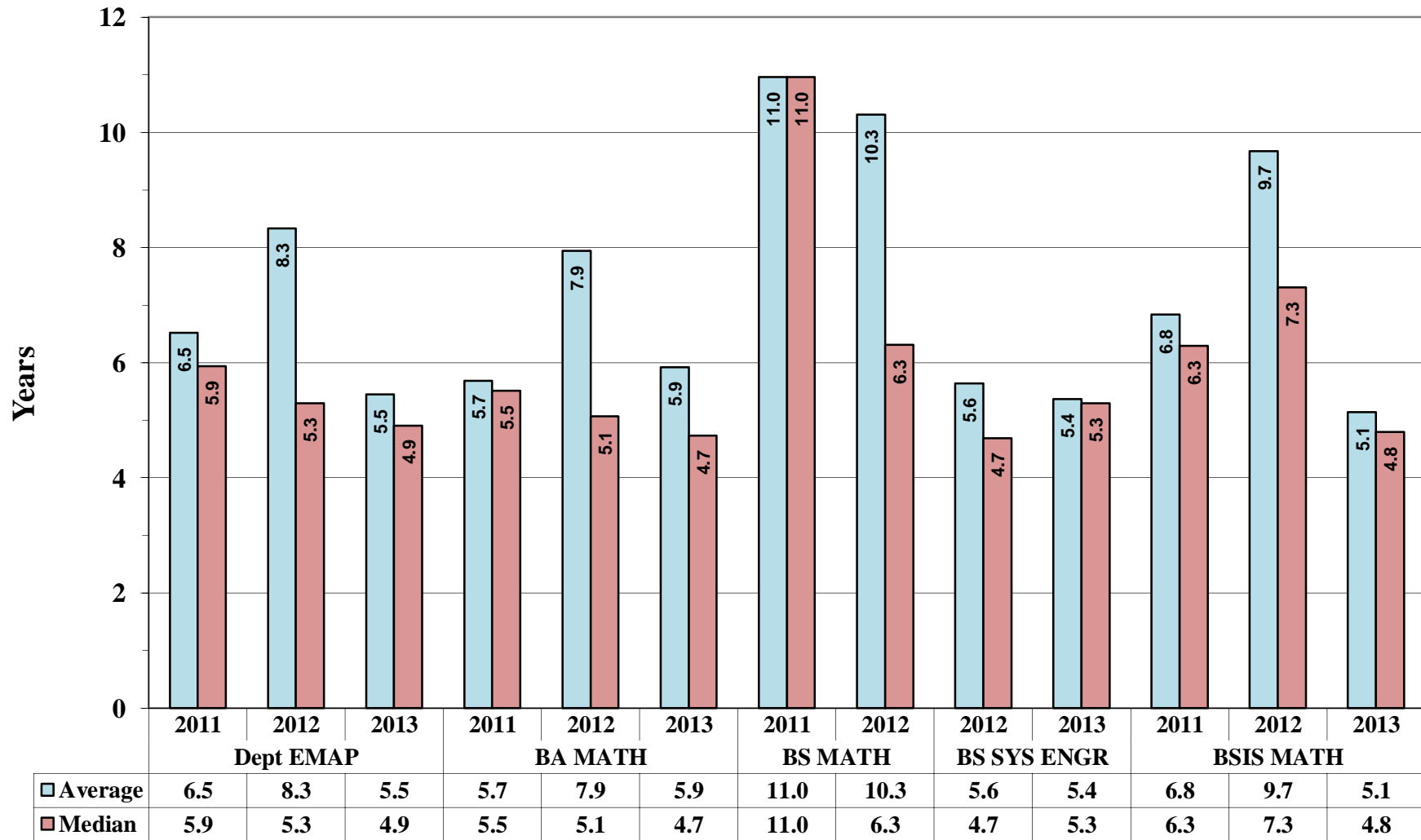
Degree	Dept	Semester											
		Fall 2009	Spring 2010	Summer II 2010	Fall 2010	Spring 2011	Summer II 2011	Fall 2011	Spring 2012	Summer II 2012	Fall 2012	Spring 2013	Summer II 2013
MS NURSING	NURS	17	0	0	12	0	0	0	0	0	11	0	0
<b>Total Dept: NURS</b>		<b>17</b>	<b>0</b>	<b>0</b>	<b>12</b>	<b>0</b>	<b>0</b>	<b>0</b>	<b>0</b>	<b>0</b>	<b>11</b>	<b>0</b>	<b>0</b>
<b>Total Coll: NH</b>		<b>17</b>	<b>0</b>	<b>0</b>	<b>12</b>	<b>0</b>	<b>0</b>	<b>0</b>	<b>0</b>	<b>0</b>	<b>11</b>	<b>0</b>	<b>0</b>
<b>Total Level: Graduate</b>		<b>138</b>	<b>126</b>	<b>43</b>	<b>118</b>	<b>106</b>	<b>39</b>	<b>127</b>	<b>89</b>	<b>37</b>	<b>139</b>	<b>98</b>	<b>37</b>
<b>TOTAL</b>		<b>455</b>	<b>527</b>	<b>123</b>	<b>401</b>	<b>520</b>	<b>108</b>	<b>406</b>	<b>519</b>	<b>133</b>	<b>451</b>	<b>537</b>	<b>122</b>



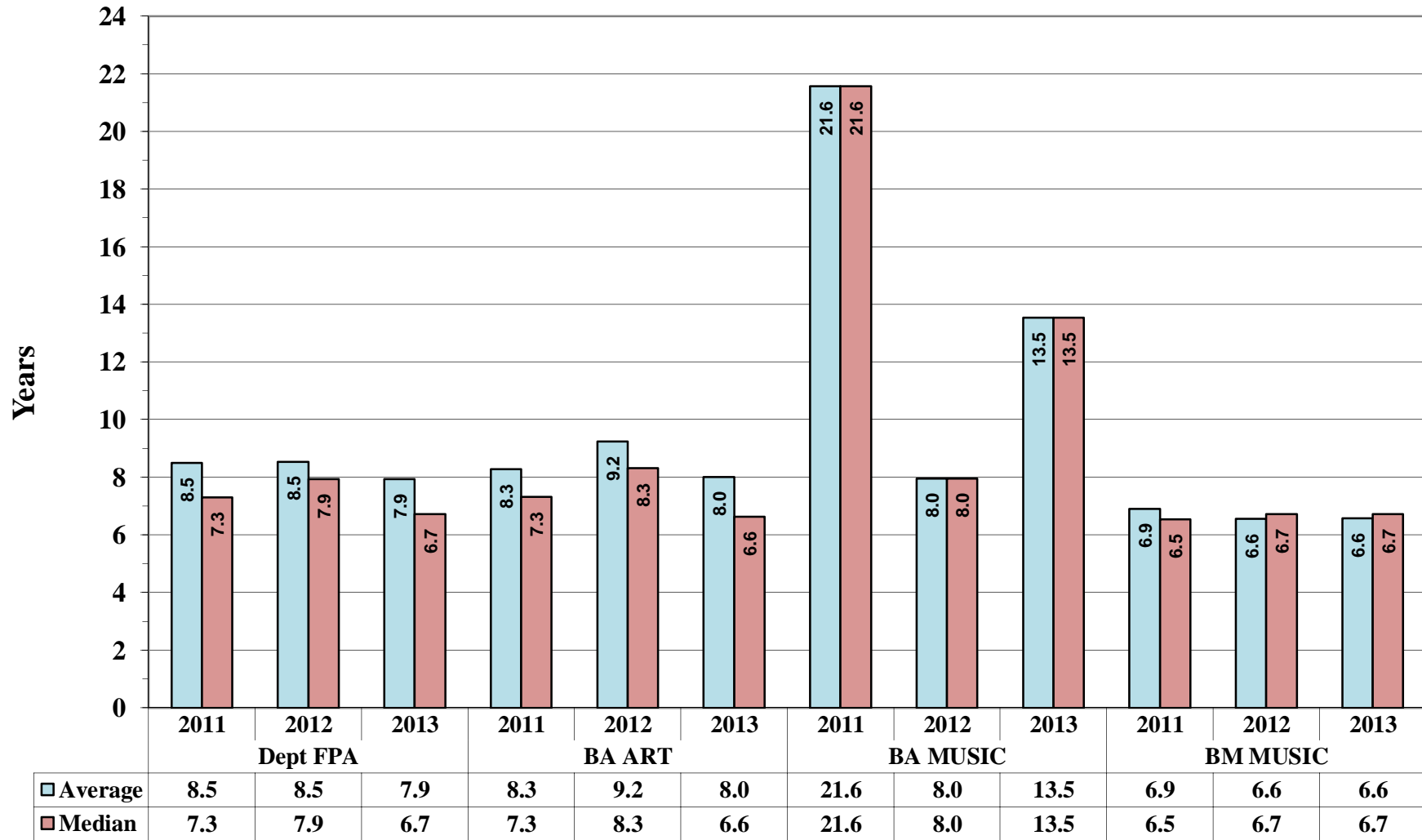
## Average and Median Time to Undergraduate Degree Dept: BC



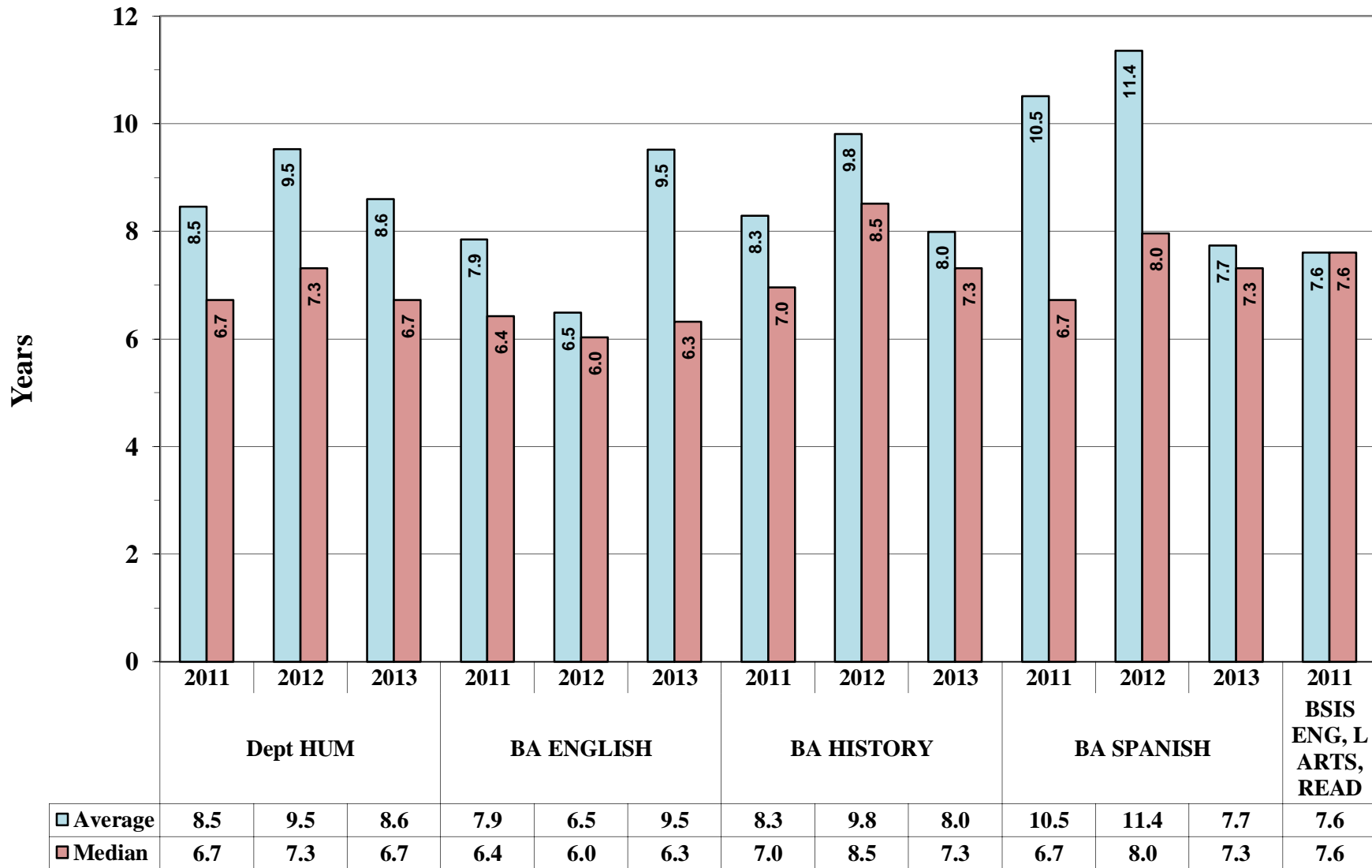
## Average and Median Time to Undergraduate Degree Dept: EMAP



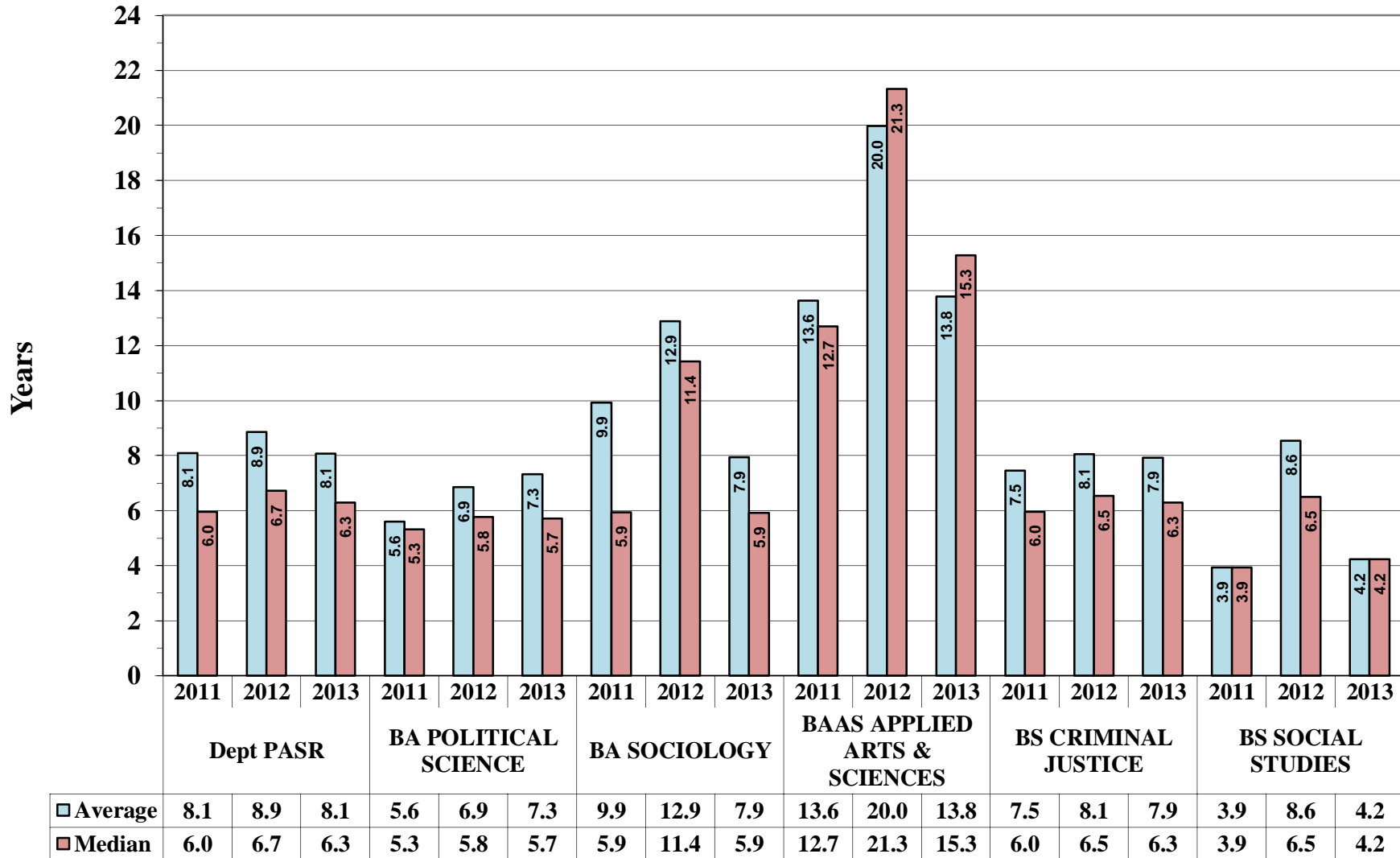
## Average and Median Time to Undergraduate Degree Dept: FPA



## Average and Median Time to Undergraduate Degree Dept: HUM



## Average and Median Time to Undergraduate Degree Dept: PASR



## Average and Median Time to Undergraduate Degree Dept: PSCM

